

ENI SEIS II South workshop
Horizon 2020/NAP Water Cluster
9-10 July 2019, Marseilles



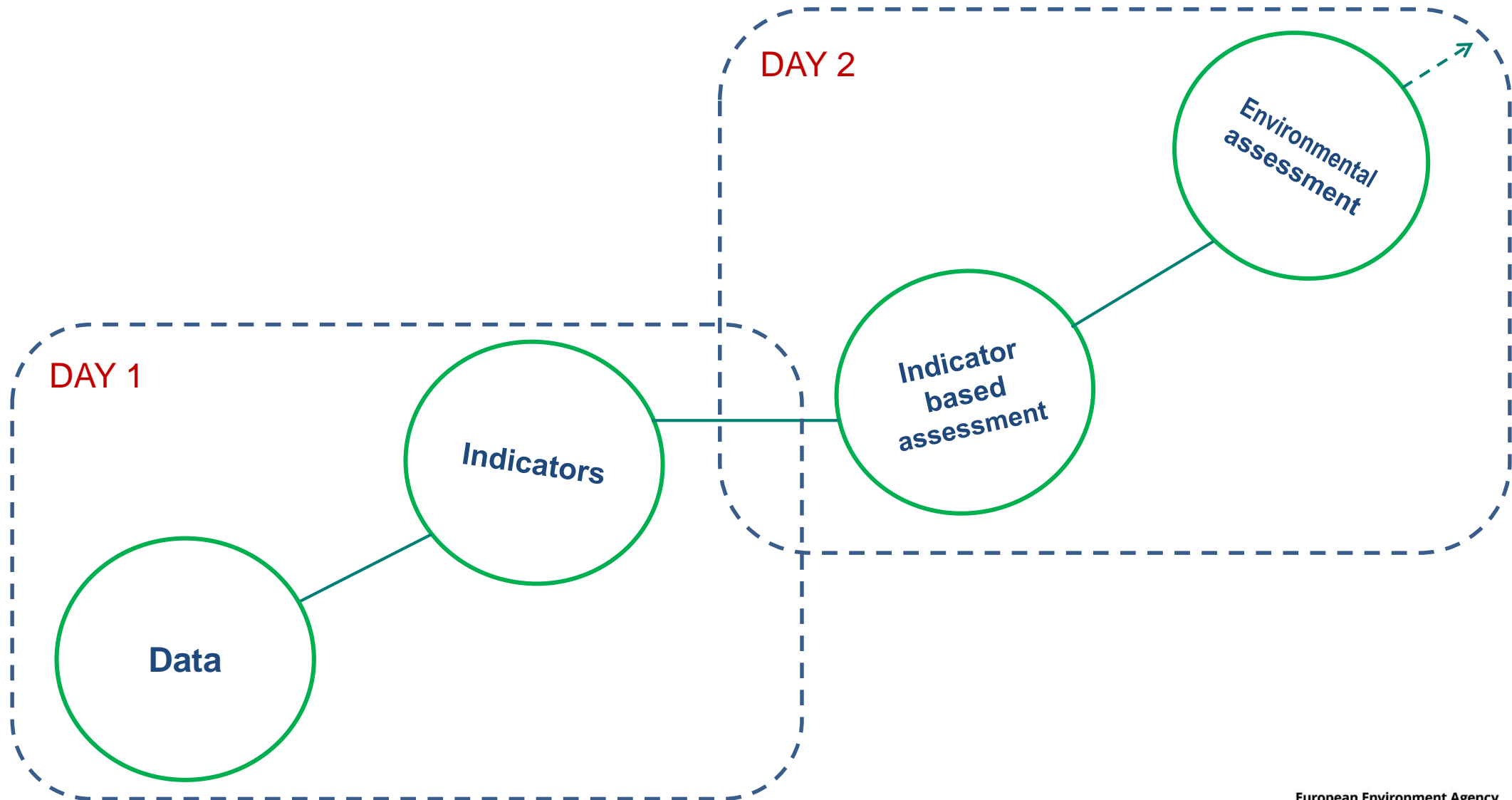
This project is funded by the European Union



European Environment Agency



From data/indicators to assessment



Agenda

DAY 2	Wednesday, 10 July 2019	
	<i>Session 4. Country level activities – population of WATER indicators and national assessment</i>	
09:00-09:10	Summary of day 1 and agenda for day 2	Information
09:10-10:30	Sharing national experiences: Progress on H2020 Initiative and SEIS developments at national level, with a focus on WATER indicators and assessment Presentations by the partner countries (<i>approximately 10 min per country following template to be provided</i>)	Discussion Information and Discussion
10:30-10:50	<i>Coffee break</i>	
10:50-12:30	Countries' presentations/interventions (continued) Regional status overview derived from country presentations. Possibility to make it interactive?	Interactive Discussion
12:30-14:00	<i>Lunch break</i>	



Agenda

DAY 2	Wednesday, 10 July 2019	
	<i>Session 5: From WATER indicators to assessment</i>	
14:00-15:00	Interactive discussions/working groups (setting tbc): <ul style="list-style-type: none"> • What are main challenges for developing WATER assessment? • Cross-linkages between WATER and other thematics – e.g. socio-economics, climate change, tourism etc • What could be key messages for WATER thematic 	Group sessions
15:00-15:20	<i>Coffee break</i>	
15:20-16:00	Interactive discussions (continued) Reporting back from group sessions	Reporting back in plenary
	<i>Session 6. Next steps and conclusions</i>	
16:00-16:45	Next steps and way forward: Summary of upcoming activities and milestones (related to WATER & H2020/SEIS in general) for 2019-2020	Decision / guidance
16:45-17:00	Conclusions and closure of the workshop	



Country level activities

- Population of WATER indicators and national assessment
- Countries are encouraged to present:
 - country-specific case studies
 - good practice examples
 - success stories
 - share difficulties and challenges



Country level activities – guiding questions

- **Infrastructure**

1. What is the national data landscape and what are the main improvements in the national (and regional) information systems?

- **Drivers**

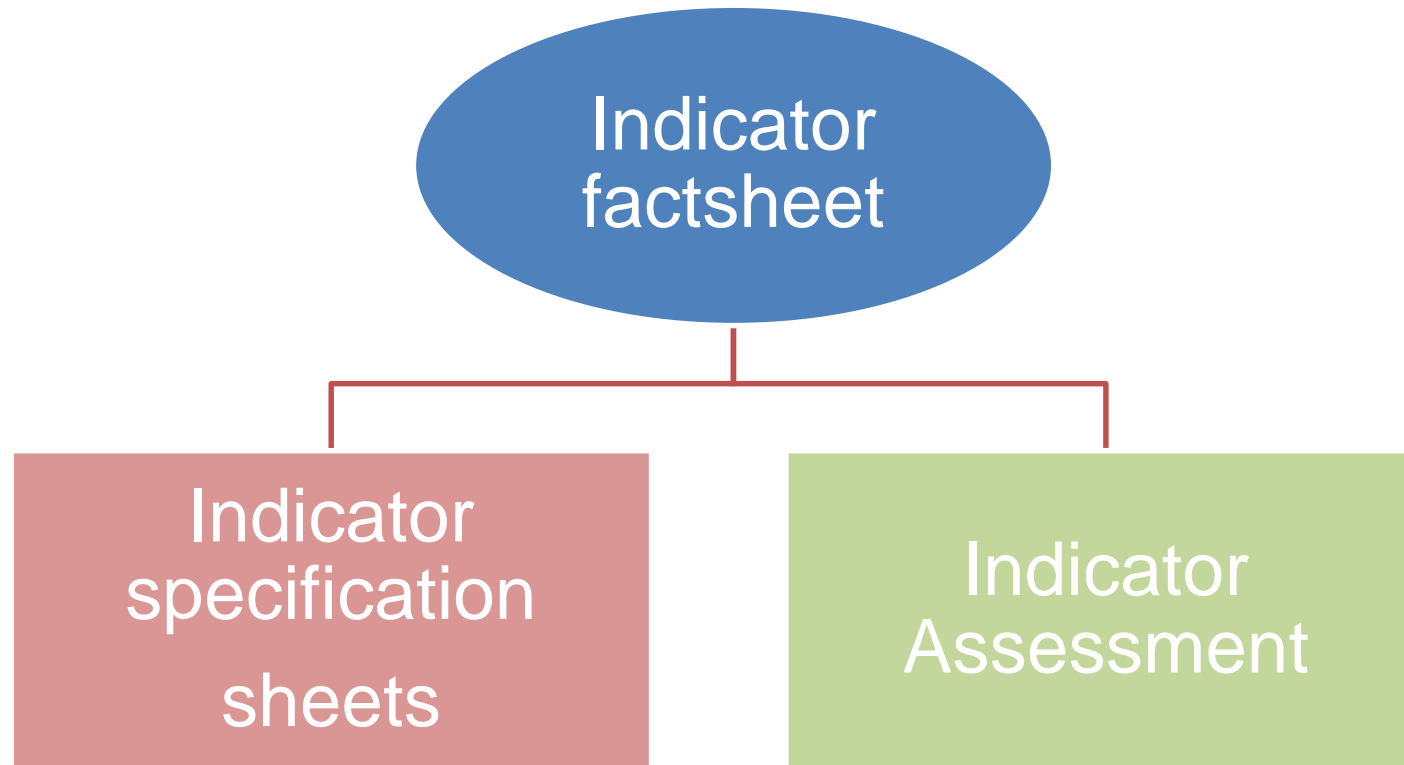
2. How are the identified trends related to the prevailing sectors?

- **Responses**

4. How do the identified trends reflect the national responses to preventing pollution from wastewater?



Indicator factsheets



- <https://eni-seis.eionet.europa.eu/south/areas-of-work/indicators-and-assessment>
- Guidance document on WATER assessment



Indicator Specification Sheet



- Rationale
- Justification
- References
- Indicator definition
 - Units
 - Geographical scope
- Policy context and targets
 - General context description, targets, related policy documents



Indicator Specification Sheet (cont.)



- **Methodology**
 - Methodology for indicator calculation,
 - geographical coverage,
 - data sources,
 - geographical units, temporal units, temporal coverage,
 - methodology for gap filling, methodological references
- **Uncertainty**
 - Methodological
 - Data sets
 - Rationale



Guidance on WATER assessment

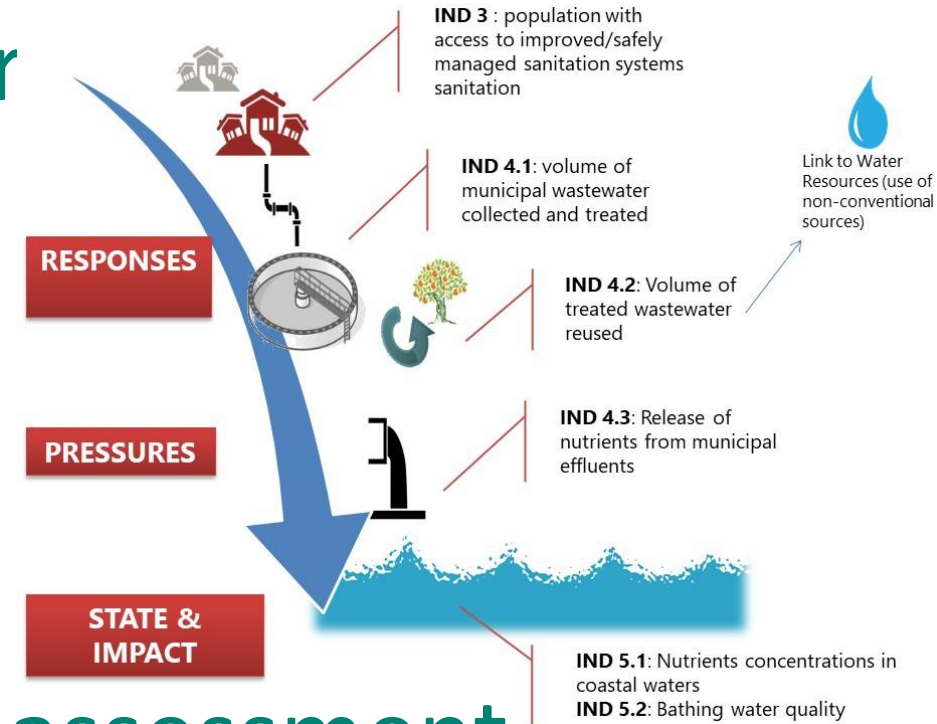
- Based on Indicator Assessment template

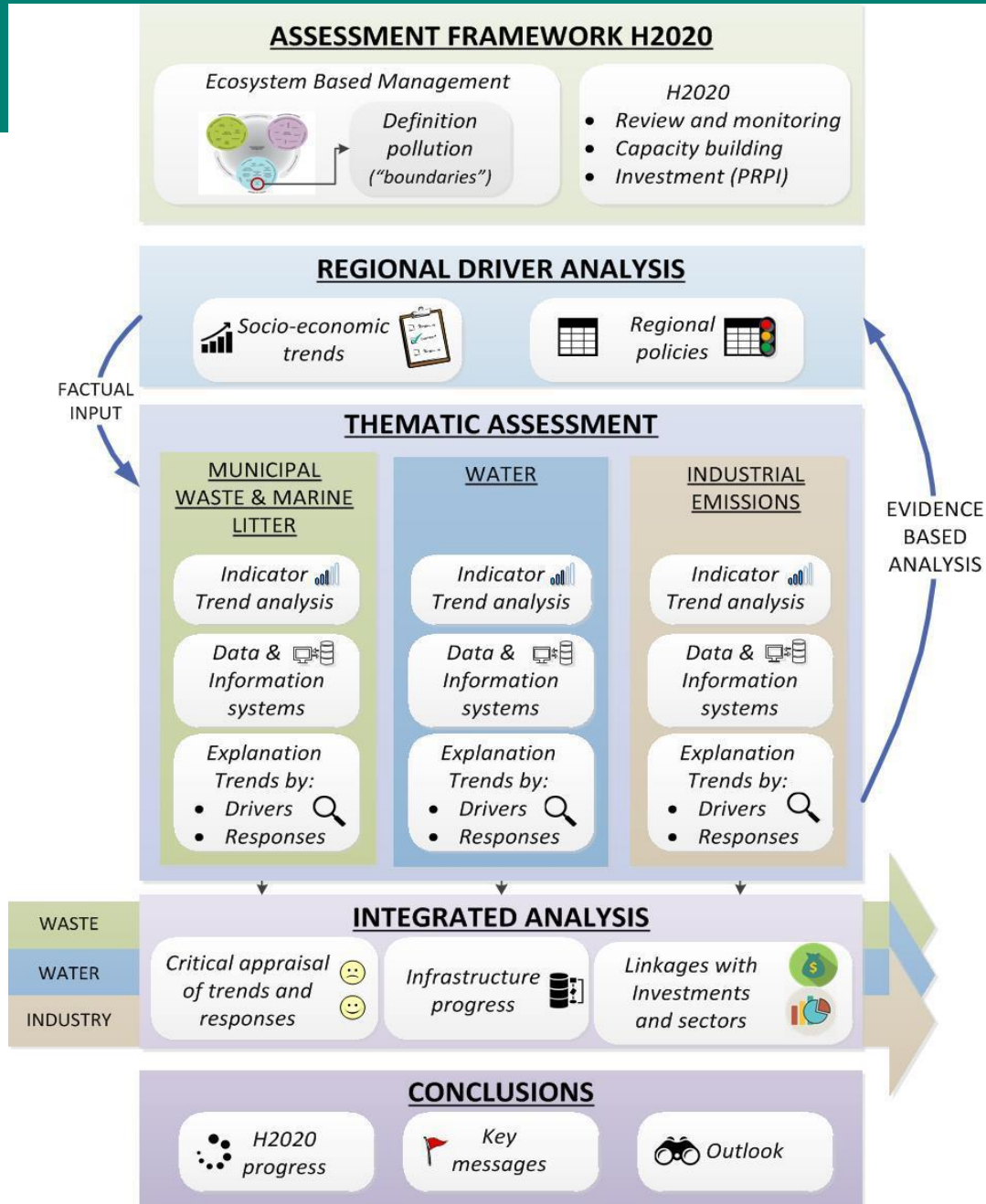
- Seperate section for each indicator

- Key (specific) policy question
- Figures
- Key (specific) assessment text
- Key messages

- One section for integrated WATER assessment

- Key policy question=>key messages=>drivers=>responses=>pressures/status/impacts





- Annotated outline following assessment framework

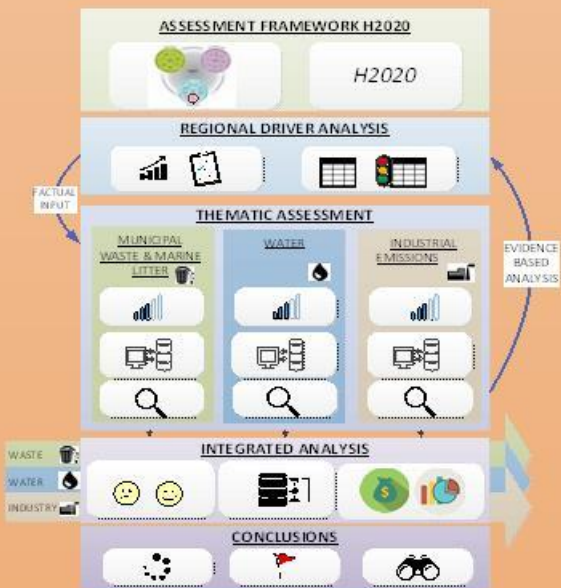


ENI-SEIS II Assessment Products

Synthesis report



Integrated Regional Assessment



Morocco Algeria Tunisia Libya Egypt Israel Palestine Jordan Lebanon

Indicator Fact Sheets

Produced by the ENI-SEISII South countries

2. **National and Regional Assessment** developed by the ENI Integrated Assessment with the support of the principal states responsible for the 2020 and 2025 Sustainable Development Goals (SDGs), describing the national contribution to the 2020 indicator, in line with the indicator specification sheets and the
3. **Synthesis report** including graphics with key messages from the regional assessment, achievements, lessons learned and main recommendations



From Indicators to Assessment

- **3. What are main challenges for developing the WATER assessment? (Pressures, State, Impacts)**
 - i. Which are the prominent trends for the WATER thematic?
 - access to sanitation, municipal wastewater management, coastal and marine water quality
 - ii. Cross-linkages between WATER and other thematics
 - e.g. land-based sources such as industrial emissions and riverine inputs, socio-economics, climate change, tourism etc
 - iii. What could be the key messages for the H2020 WATER issue?



Introduction to Group Work

- 2 groups
- 3 flip charts
- Post-its
- Dot stickers

