

Carlo Cipolloni | Roma, Italy 4-5 October 2018

InfoMAP Validation system



European Environment Agency



Reporting implementation chain

Factsheet

Data model

- UML
- XSD Schema

Data flow implementation

Data Dictionary

- Vocabulary
- Codelist

Schema validation generation

Factsheet scope

Data table	Name	Definition	Short description
3.1.	Share of total, urban and rural population with access to an improved (ISS) sanitation system	Percentage of the population (%) having access to improved sanitation systems. “Share of population with access to improved sanitation” refers to the percentage of the population with access to facilities which hygienically separate human excreta from human, animal and insect contact.	This indicator was developed by the Joint Monitoring Programme for Water Supply and Sanitation of the United Nations Children’s Fund and the World Health Organization (WHO) to help monitor progress towards one of the Millennium Development Goals.

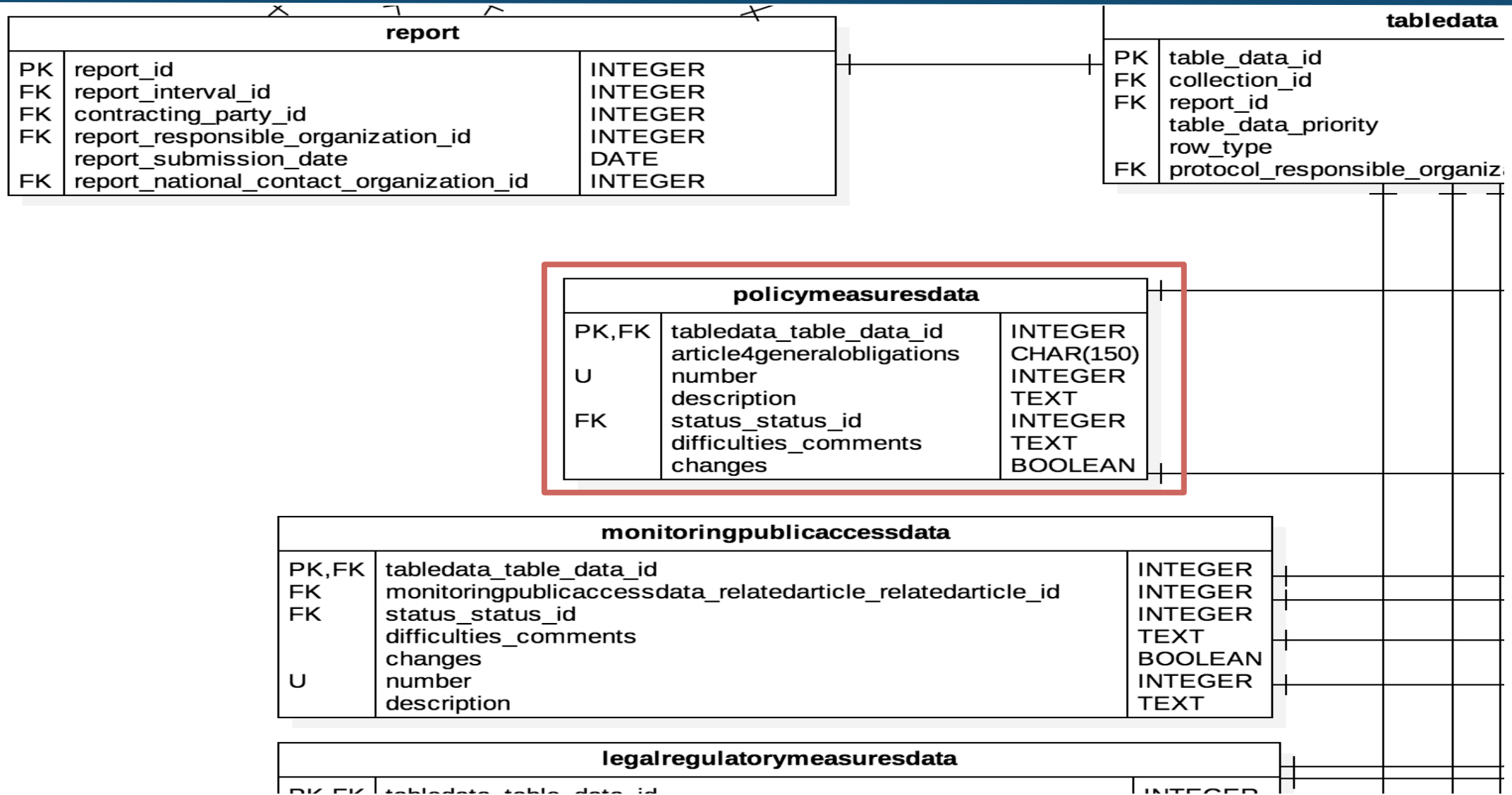
Data dictionary definition

Total_Population_ISS	Total national population with access to Improved Sanitation Systems (ISS)	Total population with access to improved sanitation system refers to the population with access to facilities which hygienically separate human excreta from human, animal and insect contact.	Type of element: non-common Datatype: integer Unit: inhabitants Min. size: 1 Max. size: 10 Min. value: 1 Max. value: 1000 000 000
Urban_Population_ISS	National population living in urban areas with access to Improved Sanitation Systems (ISS)	Urban population with access to improved sanitation system refers to the population with access to facilities which hygienically separate human excreta from human, animal and insect contact.	Type of element: non-common Datatype: integer Unit: inhabitants Min. size: 1 Max. size: 10 Min. value: 1 Max. value: 1000 000 000
Rural_Population_ISS	National population living in rural areas with access to Improved Sanitation Systems (ISS)	Rural population with access to improved sanitation refers to the population with access to facilities which hygienically separate human excreta from human, animal and insect contact.	Type of element: non-common Datatype: integer Unit: inhabitants Min. size: 1 Max. size: 10 Min. value: 1 Max. value: 1000 000 000
Data_Collection_Method	Method of data collection.	Codes elements as defined in codelist vi.	Type of element: common Datatype: integer Size: 3
Remarks	Remarks, comments or explanatory notes (free text).		Type of element: common Datatype: string Min. size: 0 Max. size: 4096

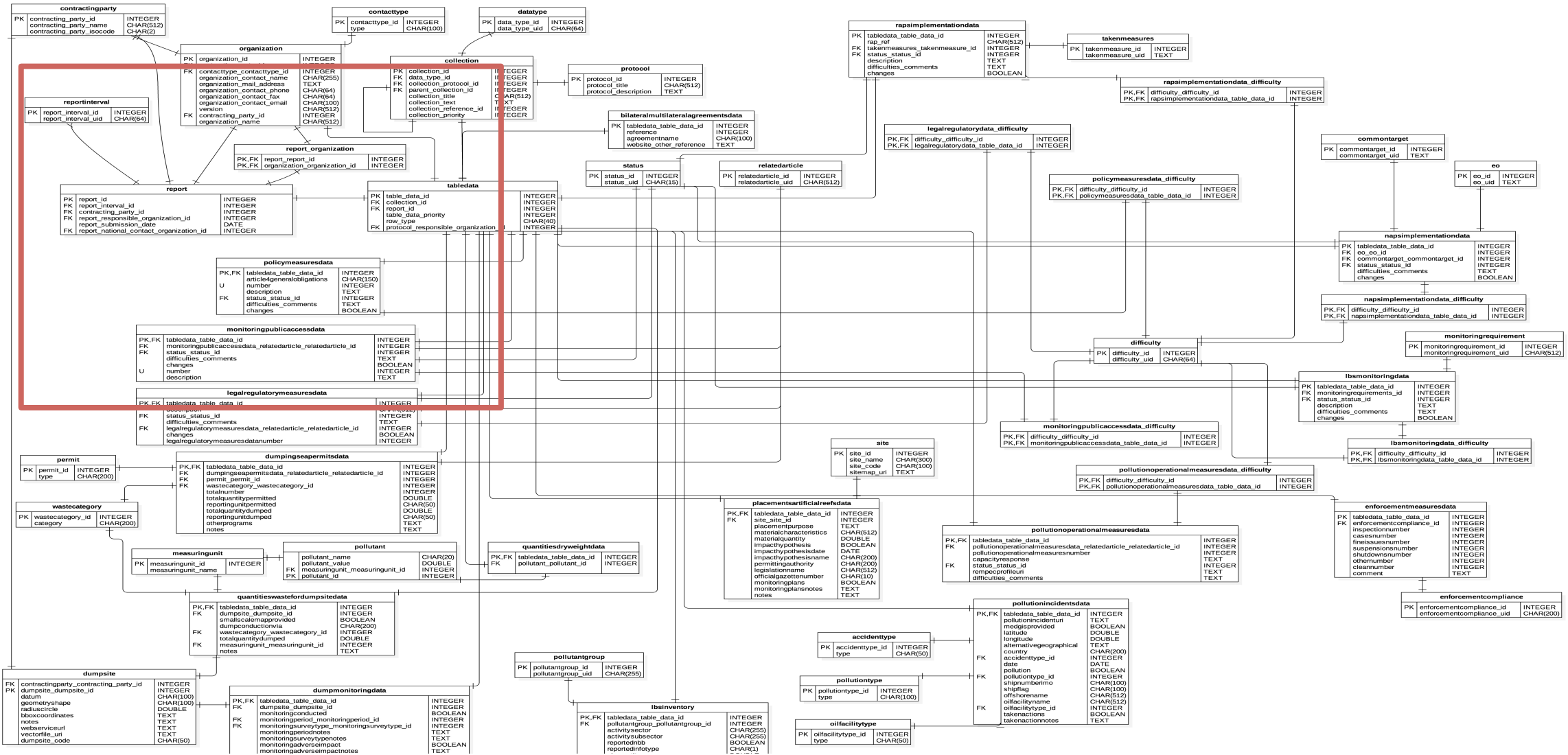
Data dictionary template

Country code	Year	Total_Population	Urban_Population	Rural_Population	Total_Population_ISS	Urban_Population_ISS	Rural_Population_ISS	Data_Collection_Method	Remarks

Data dictionary model



Data dictionary model



Data dictionary schema definition



INFOMAP
Data Dictionary

You are here: **Data Dictionary** » View schema set

- » **Help and documentation**
- » **Datasets**
- » **Tables**
- » **Data elements**
- Schemas**
- » **Vocabularies**
- » **Services**
- » **Namespaces**

View schema

Schema URL	<i>i</i>	https://dd.info-rac.org/schemas/nbb-dataflow/nbb-dataflow-2018.xsd
File name	<i>i</i>	nbb-dataflow-2018.xsd
Schema set	<i>i</i>	nbb-dataflow
Name	<i>i</i>	nbb-dataflow-2018.xsd

There are 0 QA scripts and 0 conversion scripts registered for this schema.

```
<?xml version="1.0" encoding="UTF-8"?>
<xs:schema attributeFormDefault="unqualified" elementFormDefault="qualified" targetNamespace="https://dd.
<xs:element name="NBB_Report">
  <xs:complexType>
    <xs:sequence>
      <xs:element type="xs:string" name="country"/>
      <xs:element name="contacting_party">
        <xs:complexType>
          <xs:sequence>
            <xs:element type="xs:string" name="partyname"/>
            <xs:element type="xs:string" name="rep_period_from"/>
          </xs:sequence>
        </xs:complexType>
      </xs:element>
    </xs:sequence>
  </xs:complexType>
</xs:element>
</xs:schema>
```


schema QC validation

```
<?xml version="1.0" encoding="UTF-8"?>
<xs:schema attributeFormDefault="unqualified" elementFormDefault="qualified" targetNamespace="https://dd.
<xs:element name="NBB_Report">
  <xs:complexType>
    <xs:sequence>
      <xs:element type="xs:string" name="country"/>
      <xs:element name="contacting_party">
        <xs:complexType>
          <xs:sequence>
            <xs:element type="xs:string" name="partyname"/>
            <xs:element type="xs:string" name="rep_period_from"/>
            <xs:element type="xs:string" name="rep_period_to"/>
          </xs:sequence>
        </xs:complexType>
      </xs:element>
      <xs:element name="region" maxOccurs="unbounded" minOccurs="0">
        <xs:complexType>
          <xs:sequence>
            <xs:element type="xs:byte" name="region_id"/>
            <xs:element name="record" maxOccurs="unbounded" minOccurs="0">
              <xs:complexType>
                <xs:sequence>
                  <xs:element type="xs:integer" name="pollutant_id"/>
                  <xs:element type="xs:integer" name="budget_year"/>
                  <xs:element type="xs:integer" name="sector_id"/>
                  <xs:element type="xs:integer" name="subsector_id"/>
                  <xs:element type="xs:integer" name="process_id"/>
                  <xs:element type="xs:integer" name="facility"/>
                  <xs:element type="xs:boolean" name="from_prtr"/>
                  <xs:element type="xs:integer" name="estimated_on_id"/>
                  <xs:element type="xs:double" name="emission_factor_value"/>
                  <xs:element type="xs:integer" name="emission_factor_unit_id"/>
                  <xs:element type="xs:double" name="production_value"/>
                  <xs:element type="xs:integer" name="production_unit_id"/>
                  <xs:element type="xs:double" name="total_release_value"/>
                  <xs:element type="xs:integer" name="total_release_unit_id"/>
                </xs:sequence>
              </xs:complexType>
            </xs:element>
          </xs:sequence>
        </xs:complexType>
      </xs:element>
    </xs:sequence>
  </xs:complexType>
</xs:element>
```

```
1115693.0000314591 4473636.00001822 1115729.5000314591 4473630.00001822</gml:posList>
  </gml:LinearRing>
  </gml:exterior>
  </gml:Polygon>
  </gml:surfaceMembers>
  </gml:MultiSurface>
</au:geometry>
<au:nationalCode>76028</au:nationalCode>
<au:inspireId>
  <base:Identifier>
    <base:localId>Chiaromonte</base:localId>
    <base:namespace>IT:ISTAT:com2011:AdministrativeUnit</base:namespace>
    <base:versionId nilReason="unknown" xsi:nil="true"/></base:versionId>
  </base:Identifier>
</au:inspireId>
<au:nationalLevel codeSpace="http://inspire.ec.europa.eu/codeList/AdministrativeHierarchyLevel">4thOrder</au:nationalLevel>
<au:nationalLevelName xsi:nil="true"/>
<au:country>
  <gmd:Country codeList="http://inspire.ec.europa.eu/codeList/CountryCode" codeListValue="IT">Italy</gmd:Country>
</au:country>
<au:name>
  <gn:GeographicalName>
    <gn:language xsi:nil="true"/>
    <gn:nativeness xsi:nil="true"/>
    <gn:nameStatus xsi:nil="true"/>
    <gn:sourceOfName nilReason="Unknown" xsi:nil="true"/></gn:sourceOfName>
    <gn:pronunciation xsi:nil="true"/>
    <gn:spelling>
      <gn:SpellingOfName>
        <gn:text>Chiaromonte</gn:text>
        <gn:script xsi:nil="true"/>
      </gn:SpellingOfName>
    </gn:spelling>
  </gn:GeographicalName>
</au:name>
<au:residenceOfAuthority xsi:nil="true"/>
<au:beginLifespanVersion xsi:nil="true"/>
<au:NUTS xsi:nil="true"/>
<au:boundary xlink:href="Boundary_78083_76028" xlink:title="limiteComunale_Chiaromonte"></au:boundary>
```

schema validation – Vocabulary definition

Id	Label	Status	Status Modified	Notation
1(a)	Mineral oil and gas refineries	Valid	08.02.2017	1(a)
1(b)	Installations for gasification and ...	Valid	08.02.2017	1(b)
1(c)	Thermal power stations and other ...	Valid	08.02.2017	1(c)
1(d)	Coke ovens	Valid	08.02.2017	1(d)
1(e)	Coal rolling mills with a capacity of 1 ...	Valid	01.09.2017	1(e)
1(f)	Installations for the manufacture of ...	Valid	08.02.2017	1(f)
2(a)	Metal ore (including sulphide ore) ...	Valid	08.02.2017	2(a)
2(b)	Installations for the production of pig ...	Valid	08.02.2017	2(b)
2(c)(i)	Installations for the processing of ...	Valid	08.02.2017	2(c)(i)
2(c)(ii)	Installations for the processing of ...	Valid	08.02.2017	2(c)(ii)
2(c)(iii)	Installations for the processing of ...	Valid	08.02.2017	2(c)(iii)
2(d)	Ferrous metal foundries with a ...	Valid	01.09.2017	2(d)
2(e)(i)	Installation for the production of ...	Valid	01.09.2017	2(e)(i)

schema QA validation

QA script

History

View QA script

Run QA script

XML Schema	http://converters.eionet.europa.eu/util/EPRTTR/2011	
Short name	EPRTTR report utility	
Description	JSON webservice utility method	
Result type	HTML	
Script type	xquery 1.0	
Result upper limit (MB)	10	
Active	<input checked="" type="checkbox"/>	
Local script file	EPRTTR_util_webservice.xquery (Last modified: 14 Oct 2013 11:28)	
Original source URL		

Thank you for your attention

www.info-rac.org
info@info-rac.org