

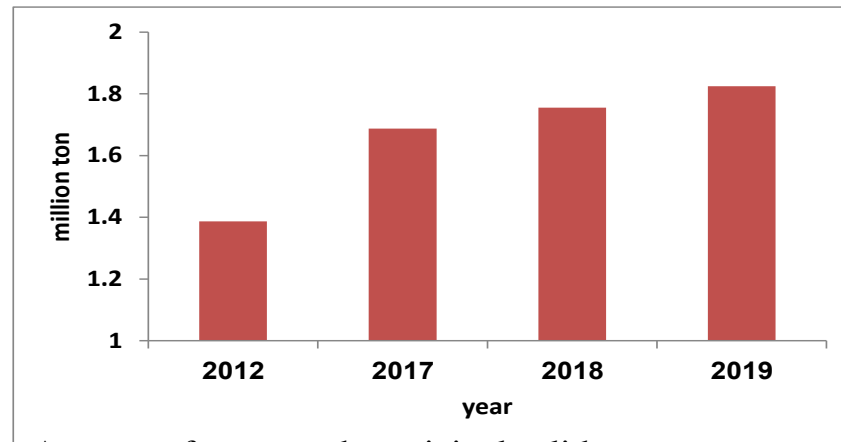
ENI SEIS II South project - Country Visibility Virtual Meeting

8 July 2020

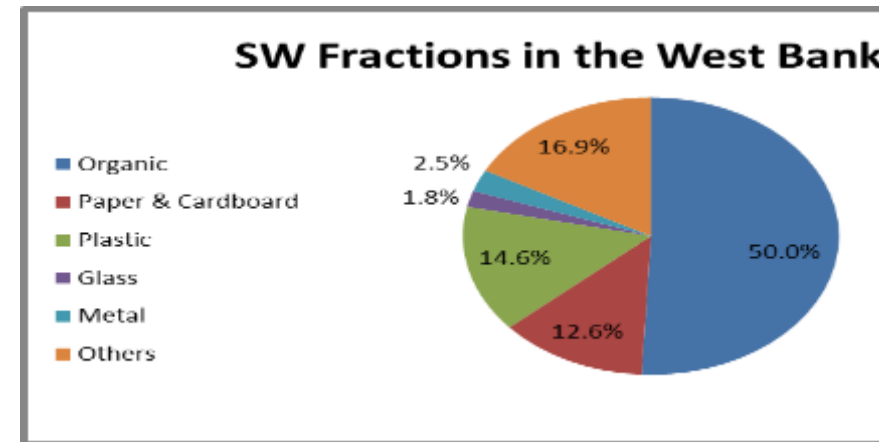
State of Environment, Palestine

National Key Messages : continue

Waste Generation and collection:



Amount of generated municipal solid waste per year



- **There is a growth of 4 % per year of municipal solid waste generation , due to the increase in population size and increase in generation rate per capita. Which will add additional pressure on the environment.**
- **There is an increase and improvement of solid waste collection to the official dumping and landfill sites.**
- **Waste collection rates vary between Gaza strip and West Bank as well as between urban, rural and camp areas.**
- **Decrease in uncontrolled dumpsites is observed.**
- **Compared to other Mediterranean countries there are more challenges facing Palestine, including technical difficulties (shortage of number and efficiency in equipments), capacity limits of the existing landfills, land use and restrictions imposed by Israeli occupation. For example, classification of Areas to A,B,C makes situation very difficult because of the need to obtain permits from Israel for infrastructure of waste management projects.**
- **Recycling activities are poor compared to regional and global practices.**

National Key Messages : continue

Water and Wastewater:

- **The slight increase in the water supply does not meet the demand of the population growth. For instance, the Annual Available Water Quantity increased only from 330 to 375 MCM in the period between 2010-2017 (~ 14%) , in the mean time population increased from ~ 4 million to ~4.73 million (~ 19%).**
- **Despite of the slight increase in the per capita water consumption , yet the Palestinian individual consumption is still less than the World Health Organization recommended water consumption guidelines.**
- **High percentage of the Palestinian population have access to improved unshared sanitation , with 55% of Palestinians are connected to a public sanitation system.**

National Key Messages : continue


Industrial emissions:

- **Industrial Emissions needs work , as data mainly not available and poor improvement is foreseen in this aspect .**
- **Capacity building needed to work on scientific based estimations .**

Observed advantages :

- **Increased cooperation between stakeholders**
- **National EIS is Developed: Data sharing is in place and increasing**
- **Several Information sharing initiatives and Systems are already exists Palestine: Geospatial portal “GeoMOLG” , Geospatial Water information System “MAWARED” , PCBS portal : “Indicators “ , EQA Industrial Pollution Inventory System , National SDI initiative.**

Find information :

Please enter your keyword (theme, subtheme, indicator, subindicator) 

Open data refers to the Environmental data, with an open license, which is free of charge for anyone to use and reuse for any purpose

Environmental Themes



Water



Land cover



Atmosphere



Biodiversity



Coastal and Marine Environment



Energy



Environmental Awareness



Solid Waste



Water	Water Quality	Springs Water Quality	Chloride concentration /Water (Springs)	1982-01	2020-06
-------	---------------	-----------------------	---	---------	---------

[DOWNLOAD FILE](#)

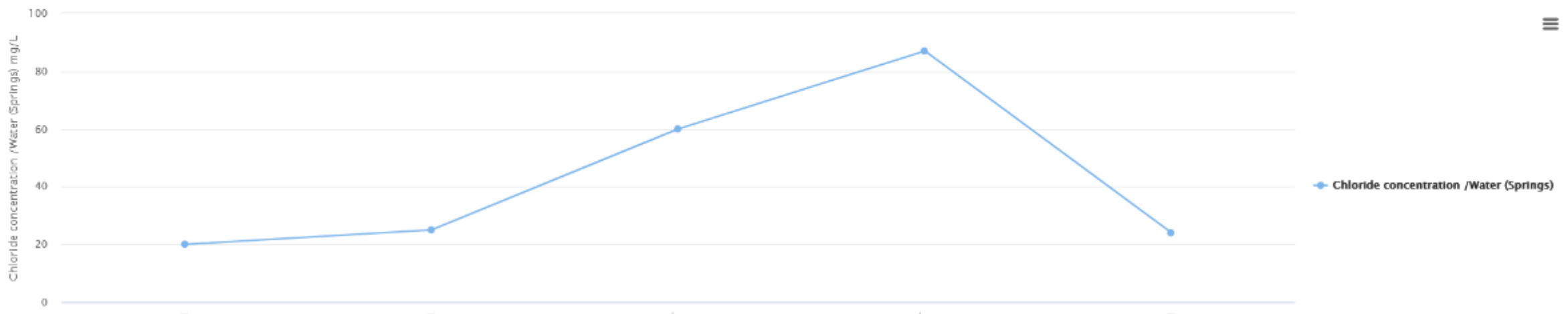
Filter:

Show: 10

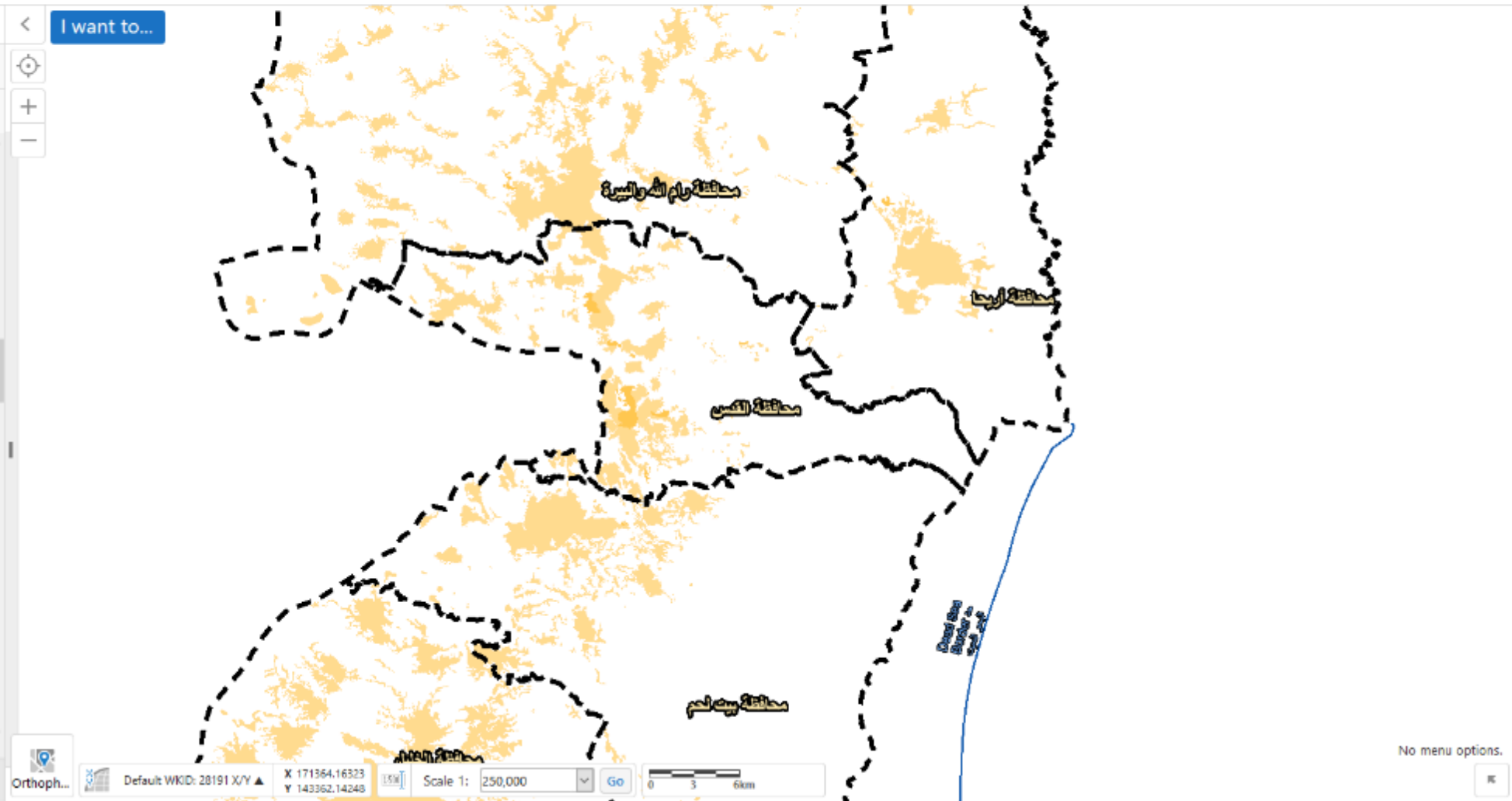
#	Station	Value	Read Date
1	Al Qur'an	20 mg/L	2005-05-04
2	Al Qur'an	25 mg/L	2007-02-13
3	Al Qur'an	60 mg/L	2010-06-09
4	Al Qur'an	87 mg/L	2016-07-02
5	Al Qur'an	24 mg/L	2017-11-08

Showing 1 to 5 of 5 entries

1



- Layers
- Default Layers | خرائط البدء
- Filter Layers... Filter
- Communities Boundaries in South | بعث في الجنوب
 - Governorates Land Boundary | ضي المحافظات
 - Dead Sea Border | حد البحر الميت
 - Jordan River | نهر الأردن
 - Green Line | الخط الاخضر
 - Historical Palestine | فلسطين التاريخية
 - GPS Points | نقاط معلومة الاعدائيات
 - Trig Points_British | نقاط الربط البريطاني
 - Trig Points_Jordanian | نقاط الربط الاردني
 - Proposed Facilities | مسات وخدمات عامة مقترحة
 - Proposed Roads | الطرق المقترحة
 - Study Site Boundary | حد منطقة الدراسة
 - Spatial Development Guiding Plans Boundary
 - Joint Service Council | مجالس الخدمات المشتركة
 - Joint Planning Areas-2014 | 2014 - قيط المشترك
 - Geographic Names | الأسماء الجغرافية
 - Mosques | المساجد
 - Schools of West Bank | مدارس الضفة الغربية





Identify Results (1)

OBJECTID	Well Name	اسم البئر	Well_ID	سنة الإنشاء	Community Name	اسم التجمع	Governorate Name	اسم المحافظة	العمق	Aquifer	الطريقة الجيولوجية	Usage
52	Al 'Eizariya No.3	بئر العيزرية رقم 3	17-12/011		Abu Dis	ابو ديس	Jerusalem	القدس	835	Lower Cenomanian	الستومنياني السفلي	Domestic (W



Gender



Construction



Crime and Victimization



Environment



Energy



Governance Statistics



Health



Industry



Israeli Violations



Labor Force



Living Conditions



National Accounts



Prices and Price Indices



Science and Technology



Tourism



Transport, storage & communication



Trade



Water & Wastewater



Finance, government & balance of payments



Indicators tells the Palestinian story through up-to-date, comprehensive statistics that you can bring to life. Choose from a variety of interactive data visualization tools, filter datasets, and share your knowledge easily. Check out each topic for an overview of the available data, and grow your understanding of Palestinian change.

Library
About
Request & Suggest

Datasets
FAQs
Login

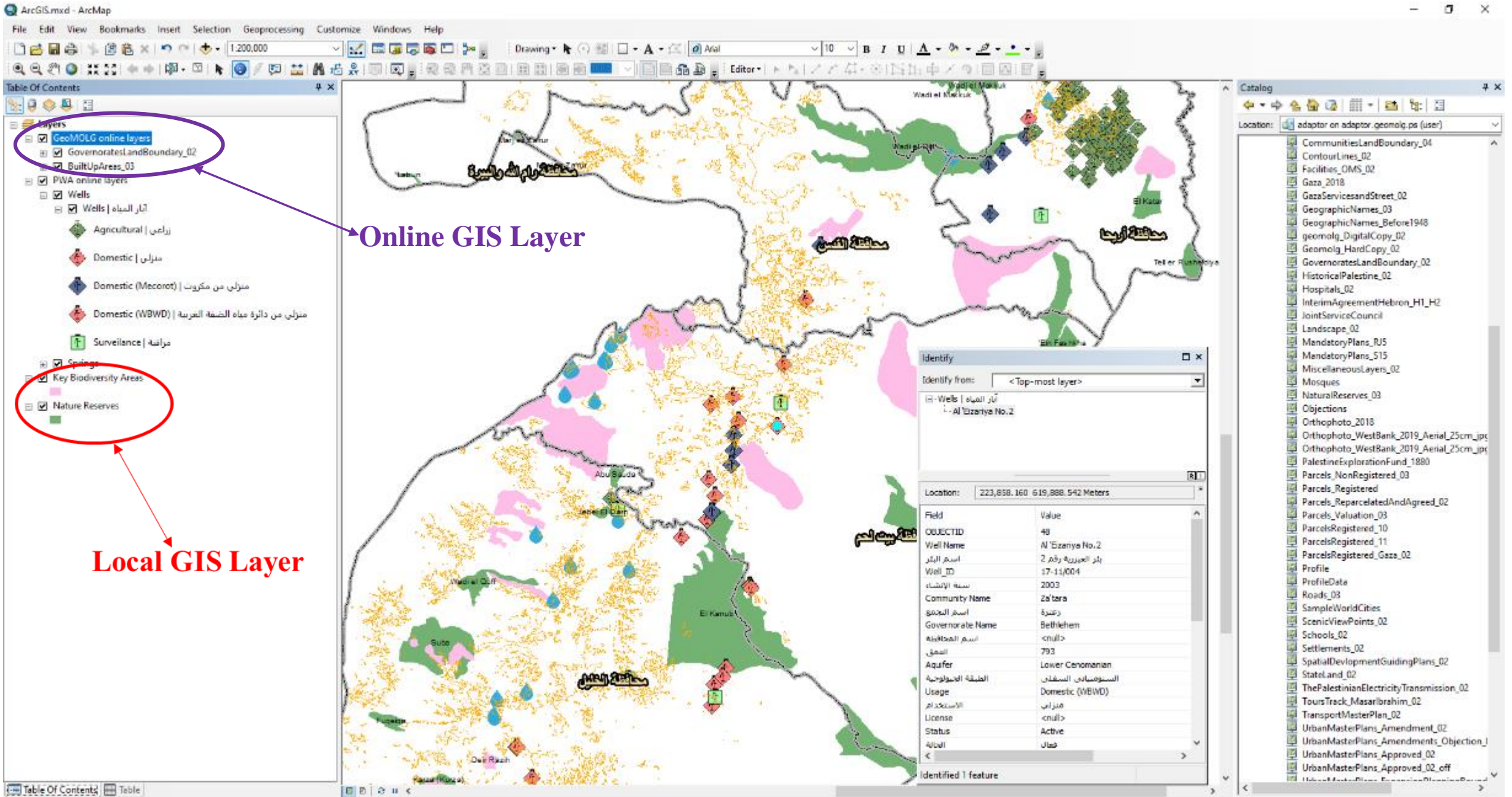
Tel: 00 970 2982700
Fax: 00 970 2982700
E-mail: dlwan@pcbs.gov.ps



Search Map

Print





Online GIS Layer

Local GIS Layer

Challenges :

- **Waste water data partially unavailable and National WW indicators to be developed.**
- **Waste data needs regular update and automation –portal, platform.**
- **There is a need to develop standards to management process of the SW like: collection , treatment, disposal, leachate concentration,.....**
- **Industrial pollution and emissions faces problems concerning availability – capacity building needed in this concern .**
- **General geopolitical situation and problems related to Israeli occupation.**