



הלשכה המרכזית לסטטיסטיקה  
Central Bureau of Statistics  
دائرة الإحصاء المركزية

# Water Statistics in Israel

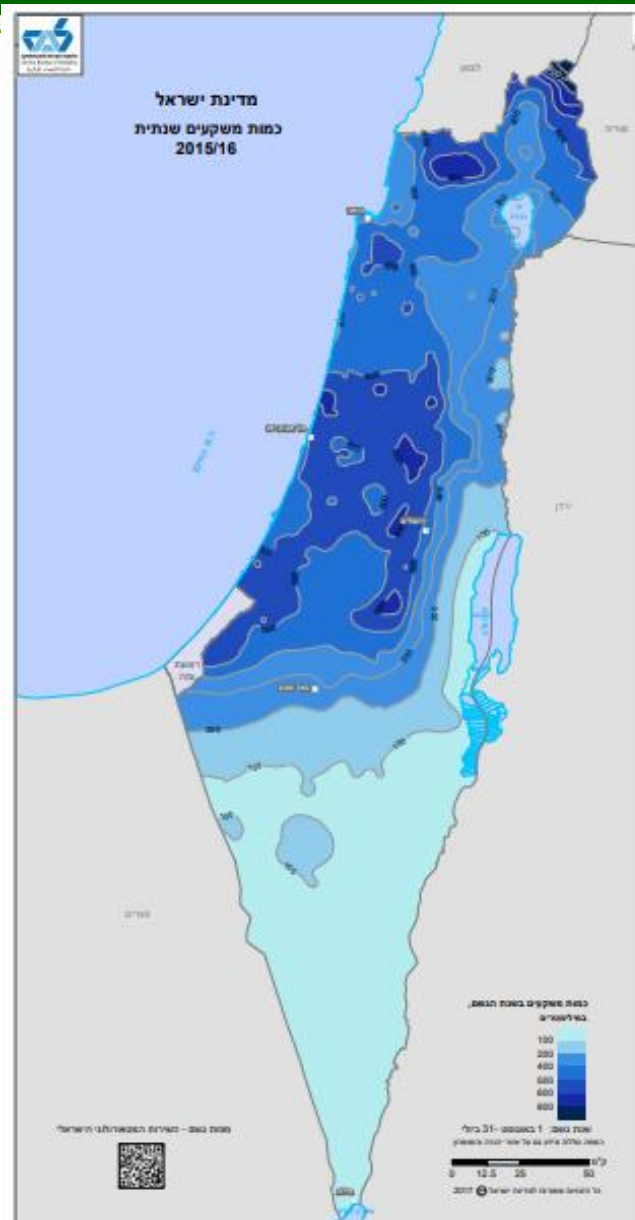
**Sivan Assor**  
**Agriculture, Environment and Energy Sector**

**08.03.2018**



הלשכה המרכזית לסטטיסטיקה  
Central Bureau of Statistics  
دائرة الإحصاء المركزية

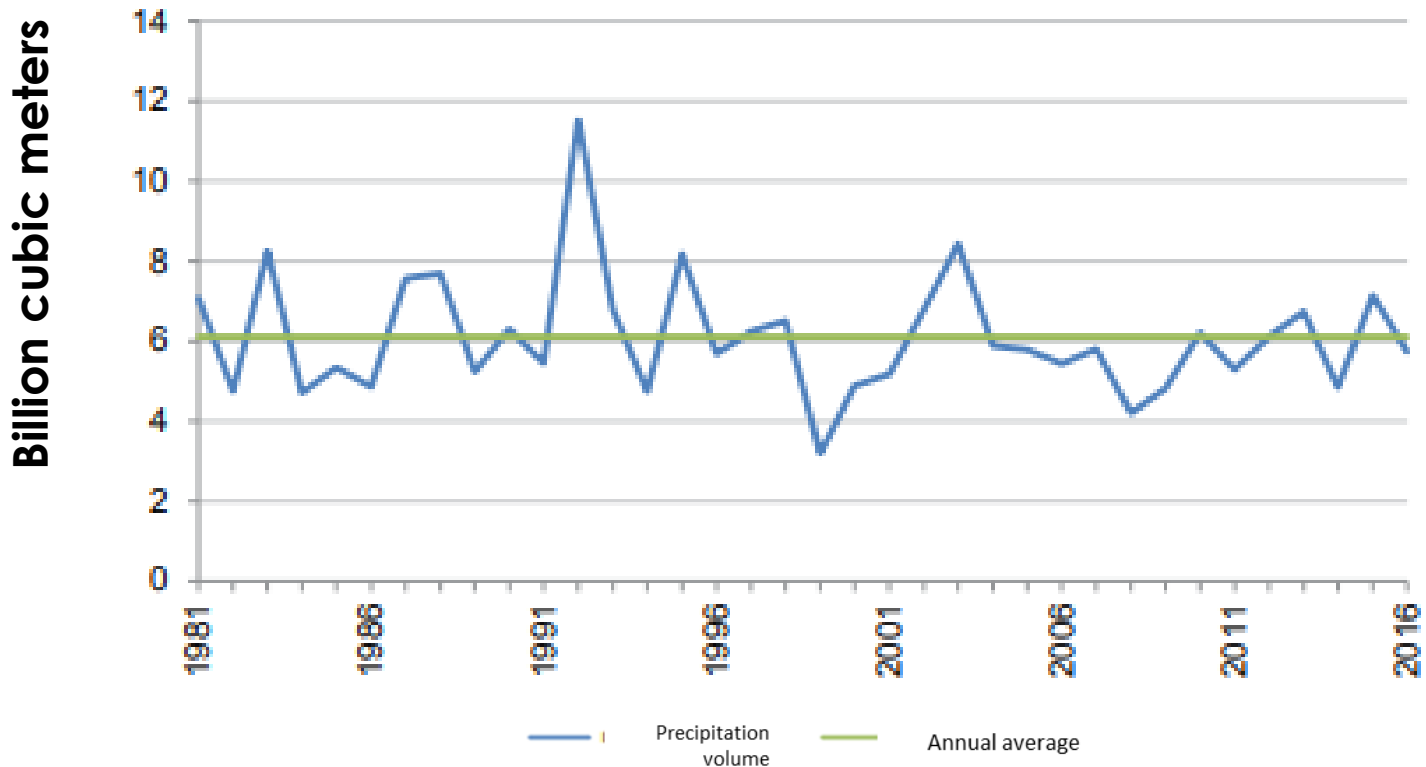
# Precipitation Map





הלשכה המרכזית לסטטיסטיקה  
Central Bureau of Statistics  
دائرة الإحصاء المركزية

# Precipitation volume

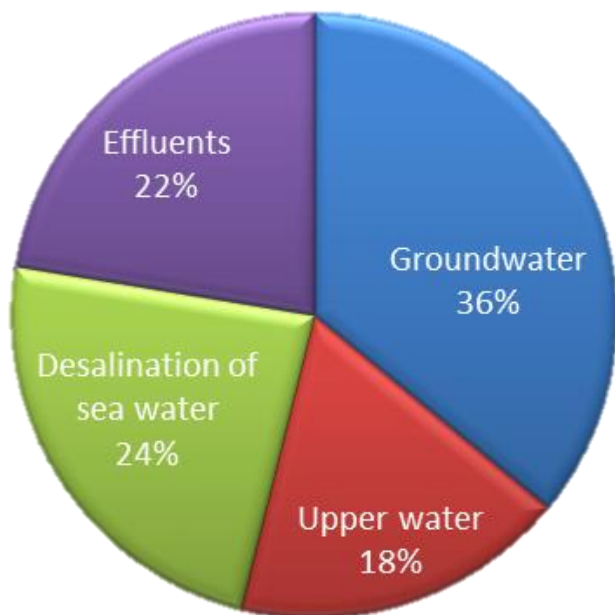




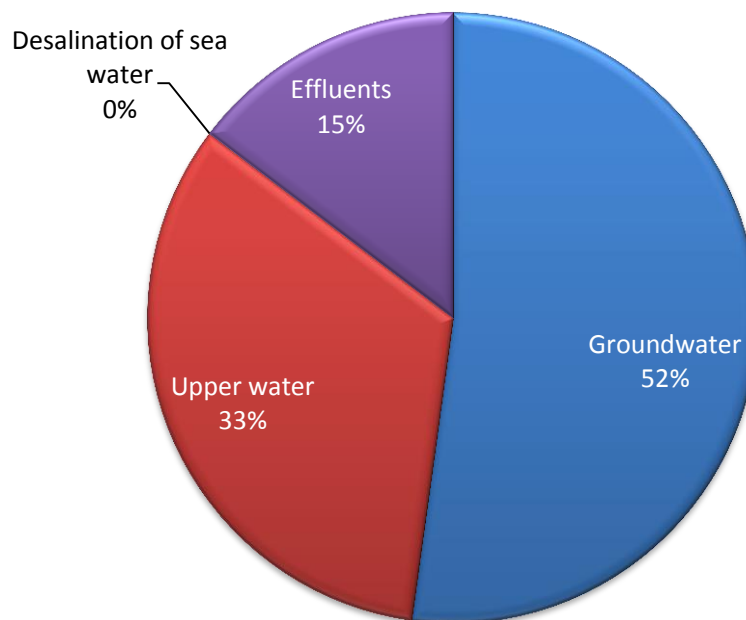
הלשכה המרכזית לסטטיסטיקה  
Central Bureau of Statistics  
دائرة الإحصاء المركزية

# Water production by type

2015



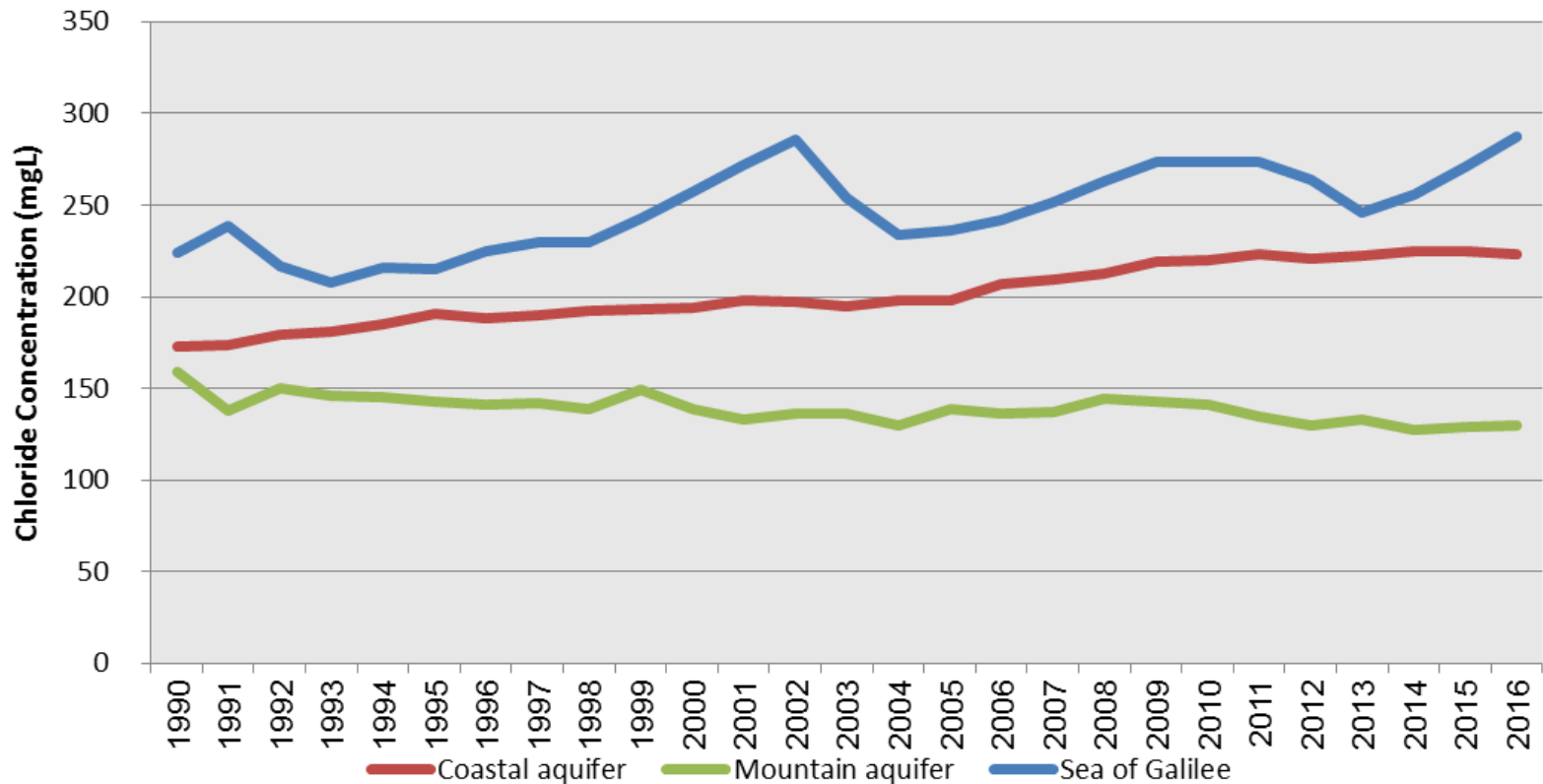
2000





הלשכה המרכזית לסטטיסטיקה  
Central Bureau of Statistics  
دائرة الإحصاء المركزية

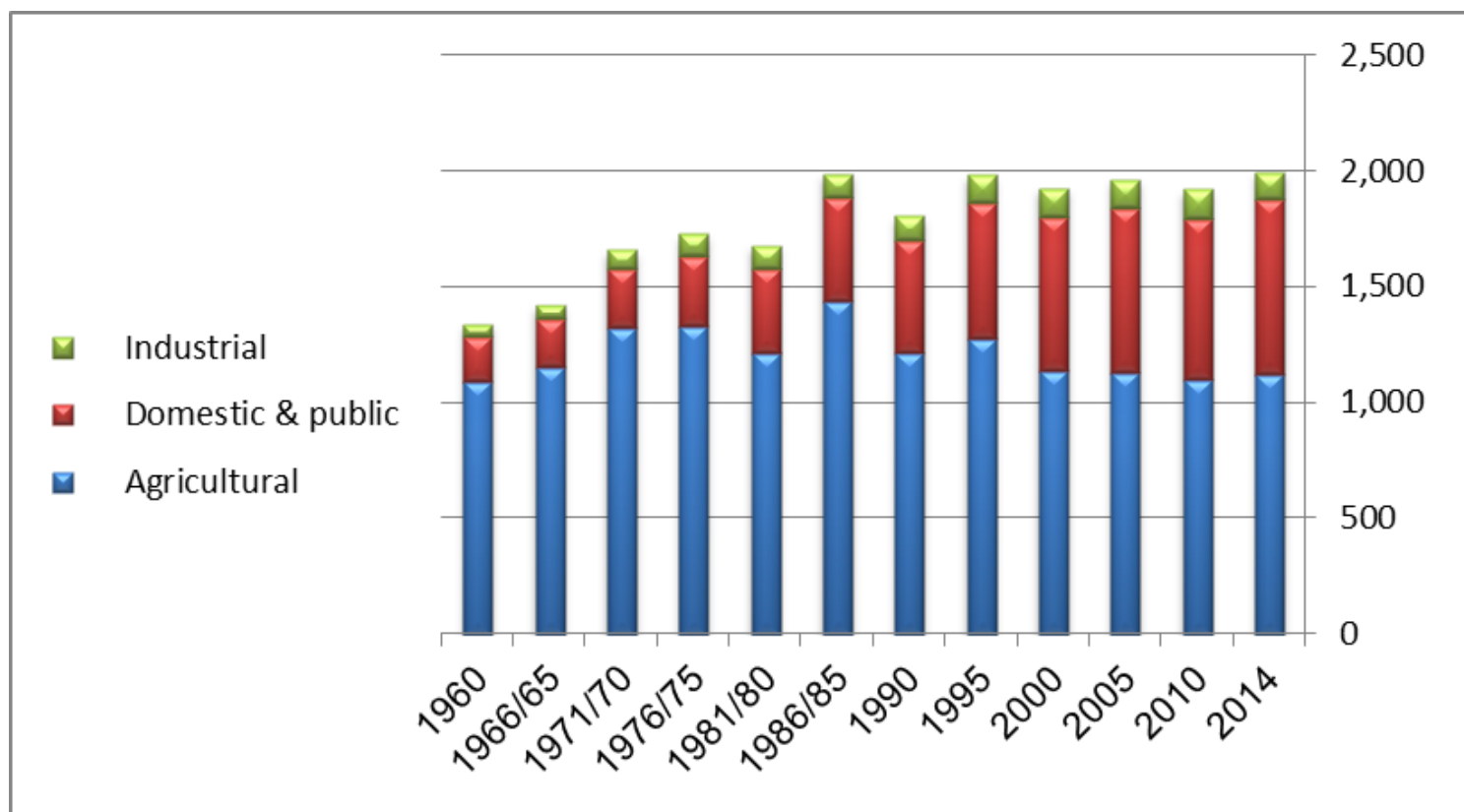
# Average water salinity in major water sources





הלשכה המרכזית לסטטיסטיקה  
Central Bureau of Statistics  
دائرة الإحصاء المركزية

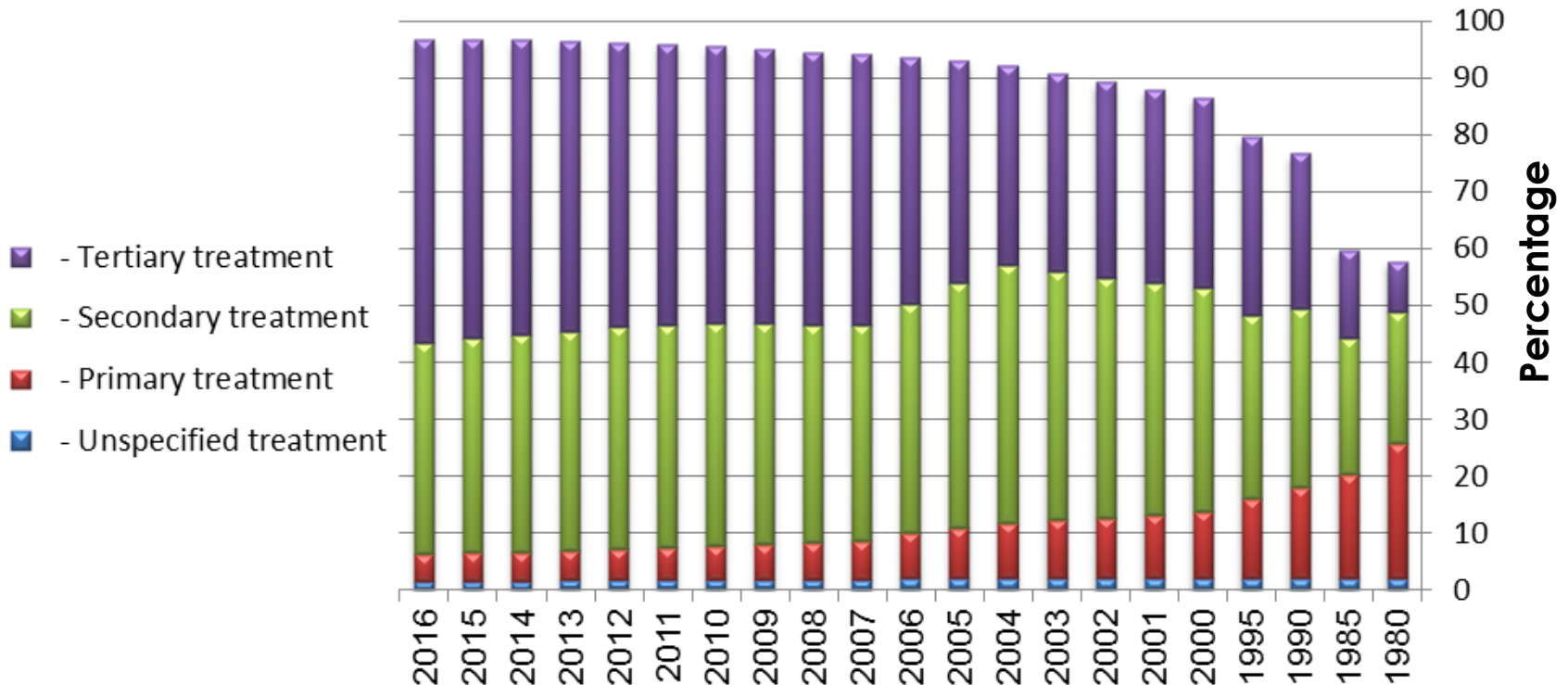
# Water consumption by sector





הלשכה המרכזית לסטטיסטיקה  
Central Bureau of Statistics  
دائرة الإحصاء المركزية

# wastewater treatment plants by treatment type 1980-2015





הלשכה המרכזית לסטטיסטיקה  
Central Bureau of Statistics  
دائرة الإحصاء المركزية

# Data Sources

- Water Authority
- The Ministry of Health
- The Ministry of Environmental Protection
- Israel Nature and Parks Authority
- Kishon River Authority
- Yarqon River Authority
- Dan Region Wastewater Treatment Plant





הלשכה המרכזית לסטטיסטיקה  
Central Bureau of Statistics  
دائرة الإحصاء المركزية

# Satellite account of water in Israel

## Major Goals of the Water Account

Establish an economic and environmental database of water, while gathering and presenting information regarding:

- Sources and uses of different types of water
- Water expenditure by industry
- Abstraction, distribution and other water costs
- Product of the water industries
- Pollution by industry



הלשכה המרכזית לסטטיסטיקה  
Central Bureau of Statistics  
دائرة الإحصاء المركزية

# Database Construction

## Principles

High resolution for variables, used for background calculation

Definition of algorithms for variables' calculation by industries, suppliers and user sectors

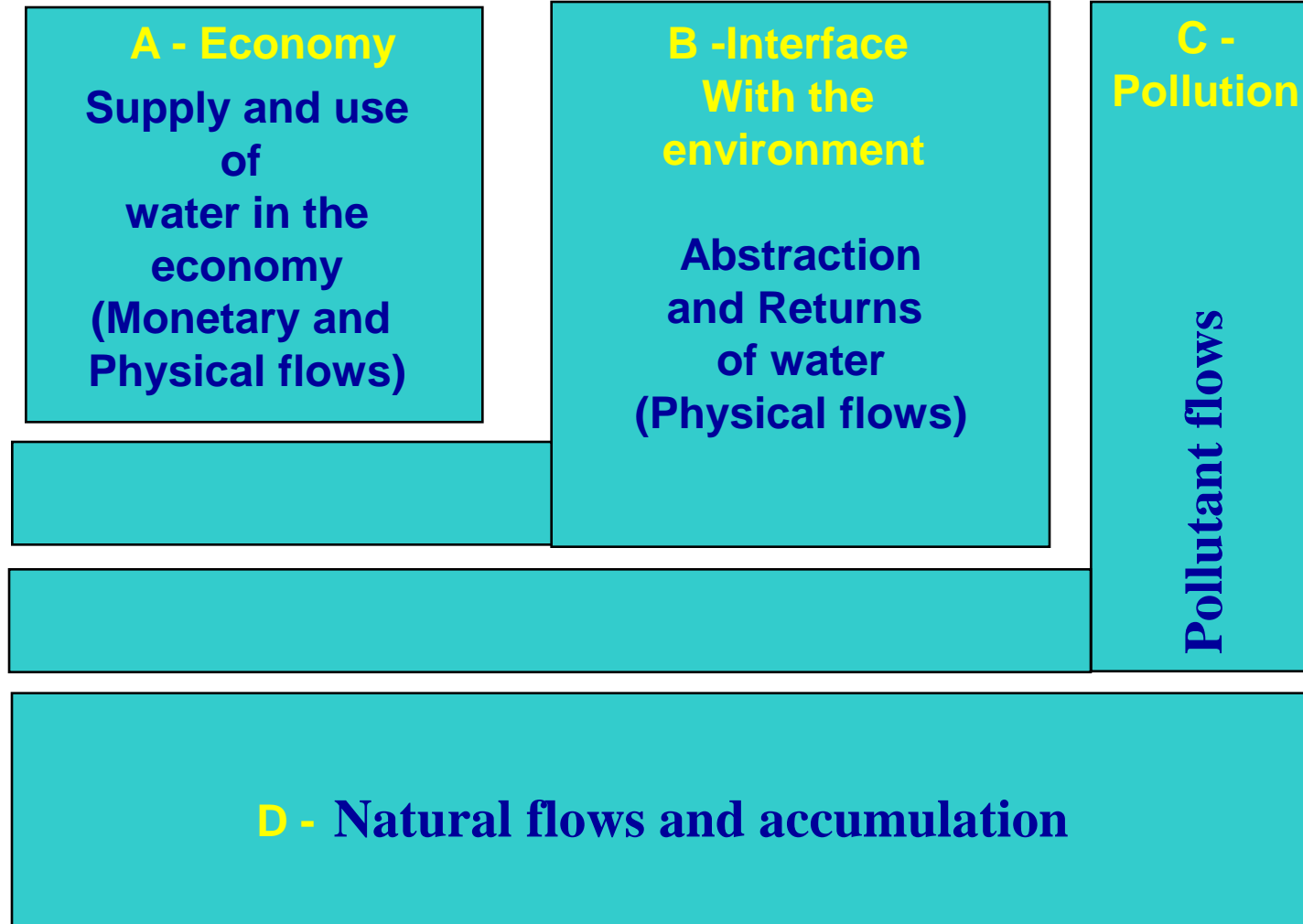
## Learning from:

Previous research and other countries' experiences

Cooperation with colleagues from IT Department (ICBS)

Cooperation with stakeholders (Water Authority and the academia)

# NAMEA Methodology



# Set of Tables

- A**
- B**
- C**

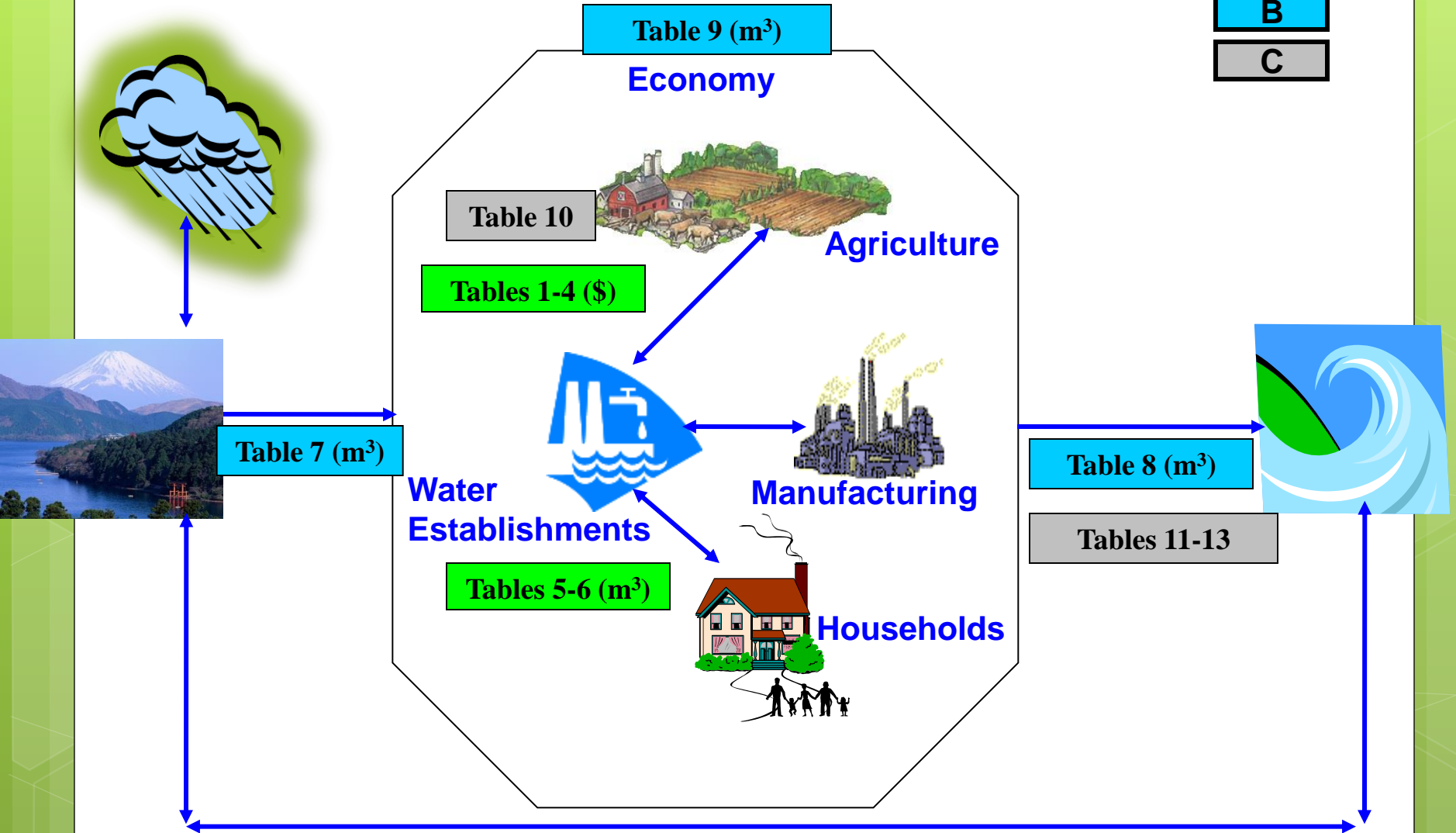


Table 9 (m<sup>3</sup>)

Economy

Table 10



Agriculture

Tables 1-4 (\$)



Water Establishments

Tables 5-6 (m<sup>3</sup>)



Manufacturing

Table 8 (m<sup>3</sup>)

Tables 11-13



Households

Table 7 (m<sup>3</sup>)



# Data sources

- Water Authority
  - abstraction and use of water by source, types and user sector
  - taxes and fees paid by water abstractors
- ICBS
  - Municipalities' data regarding economic variables
  - Production data by industry
  - Various Coefficients for calculated variables
  - Survey in the water and water related industries (financial Reports, questionnaire and administrative)
  - Waste and wastewater survey in the manufacturing industries
- Other government agencies, such as the Ministry of environmental protection

**Thank  
you!**

