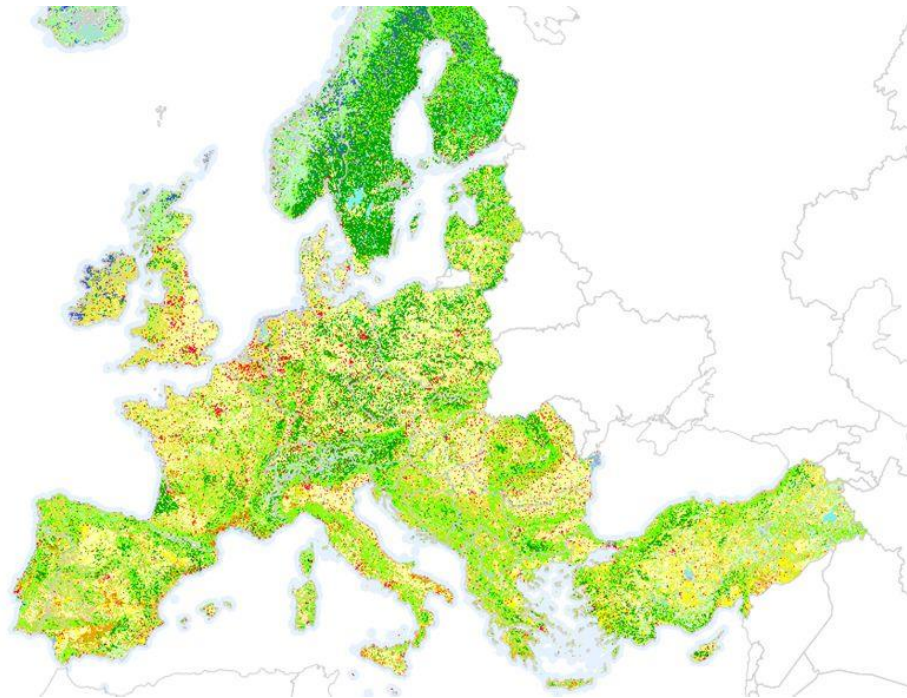


*Implementation of the Shared Environmental  
Information System (SEIS) principles and practices  
in the Eastern Partnership countries*

*The **ENI SEIS II East** project (2016-2020)*

**Activity 2.3: Pilot on extending CORINE  
Land Cover (CLC) methodology**

# Inception visits and feasibility



Ukraine (2016)  
Georgia (2016)  
Azerbaijan (2017)  
Moldova (2017)

Belarus  
Armenia

**“Capabilities to consider in selecting partners”**

# Partners and synergies

---

**European Environment Agency  
European Topic Centre on Urban,  
Land and Soil Systems**



# Training and support package

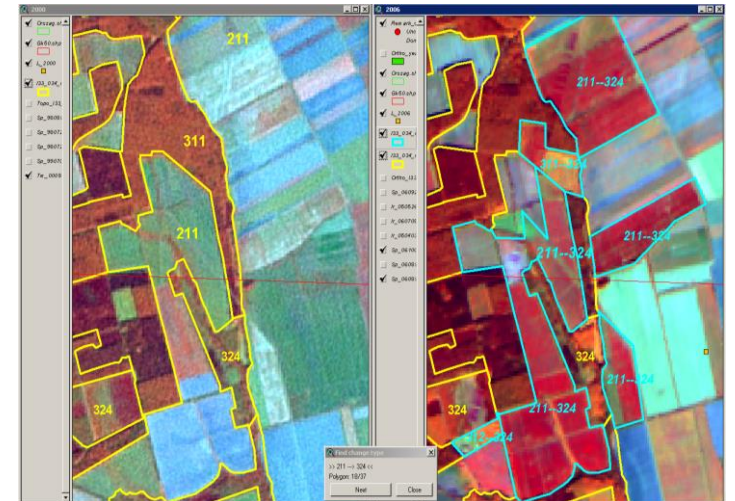
- Provide support for the identification of, and access to, input data/imagery needed to carry out a mapping exercise for the pilot areas
- 1<sup>st</sup> training course for national teams (CLC mapping)

Map 1 (date 1)

- 2<sup>nd</sup> training course on CLC-change mapping

Map 2 (date 2) + Map 3 (change)

- Verification / quality control (also helpdesk / support functions throughout the exercise)
- Regional events



# Next steps

---

- Inception visits / feasibility in Armenia and Belarus
- Agree on modalities and initiate national training
- Eionet NRC land cover meeting 2017 (9–10 October)  
+ ENI East event back-to-back

**End of mapping activity July 2018**

... applications of CLC data (e.g. Indicator on land uptake, ...)