

Copenhagen | Tuesday 12 November 2019 |

*György Büttner, ETC-ULS*

## SESSION 3

# Overview of thematic project activities 2019-2020



# Progress on ENI East Land Cover activity

## Main aims of CLC pilot studies (*Activity 2.3*)

- To set-up a National Team (NT) to implement a CORINE Land Cover (CLC) pilot study in the country.
- Producing a pilot CLC map for the capital region.
- Producing a pilot CLC-Change map for the same area (map changes taken place in 10-18 years).
  - Technical assistance (training, verification, software...) by ETC-

ULS



# Progress on ENI East Land Cover activity



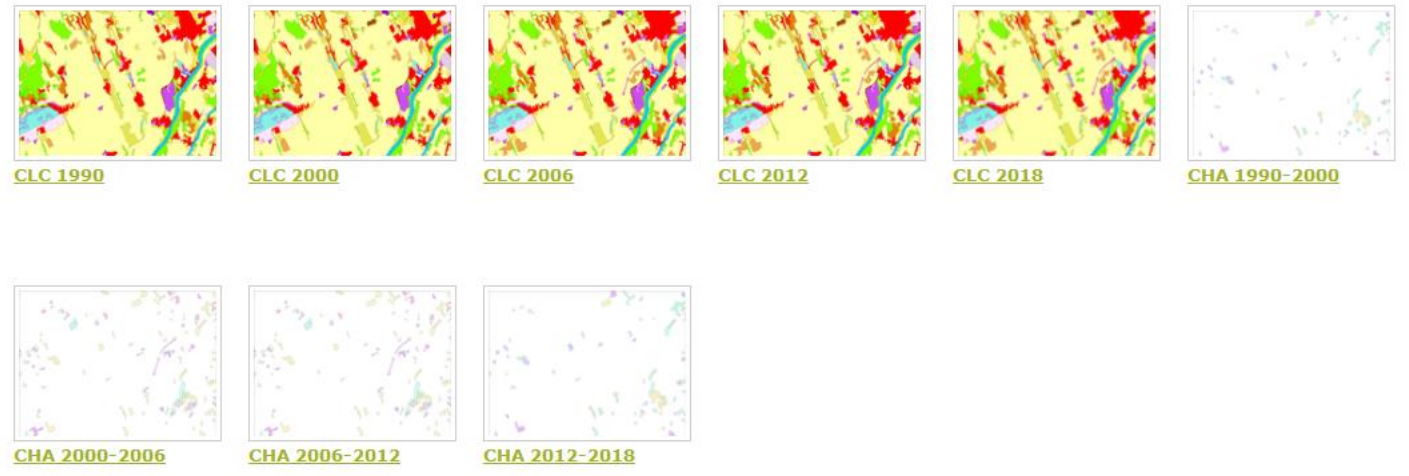
You are here: [Home](#) / [Pan-European](#) / [CORINE Land Cover](#)

## CORINE Land Cover

Print

### User corner

- How to access our data
- Technical library
- Factsheets
- Use cases



The CORINE Land Cover (CLC) inventory was initiated in 1985 (reference year 1990). Updates have been produced in 2000, 2006, 2012, and 2018. It consists of an inventory of land cover in 44 classes. CLC uses a Minimum Mapping Unit (MMU) of 25 hectares (ha) for areal phenomena and a minimum width of 100 m for linear phenomena. The time series are complemented by change layers, which highlight changes in land cover with an MMU of 5 ha. Different MMUs mean that the change layer has higher resolution than the status layer. Due to differences in MMUs the difference between two status layers will not equal to the corresponding CLC-Changes layer. If you are interested in CLC-Changes between two neighbour surveys always use the CLC-Change layer.

## Links to Copernicus Land Monitoring Service

- CLC is the flagship product
- Methodology and data are the same used in the other Copernicus products
- Experience, know-how and software shared with other Copernicus products
- Some use-cases are shared with other Copernicus products



<https://land.copernicus.eu/>



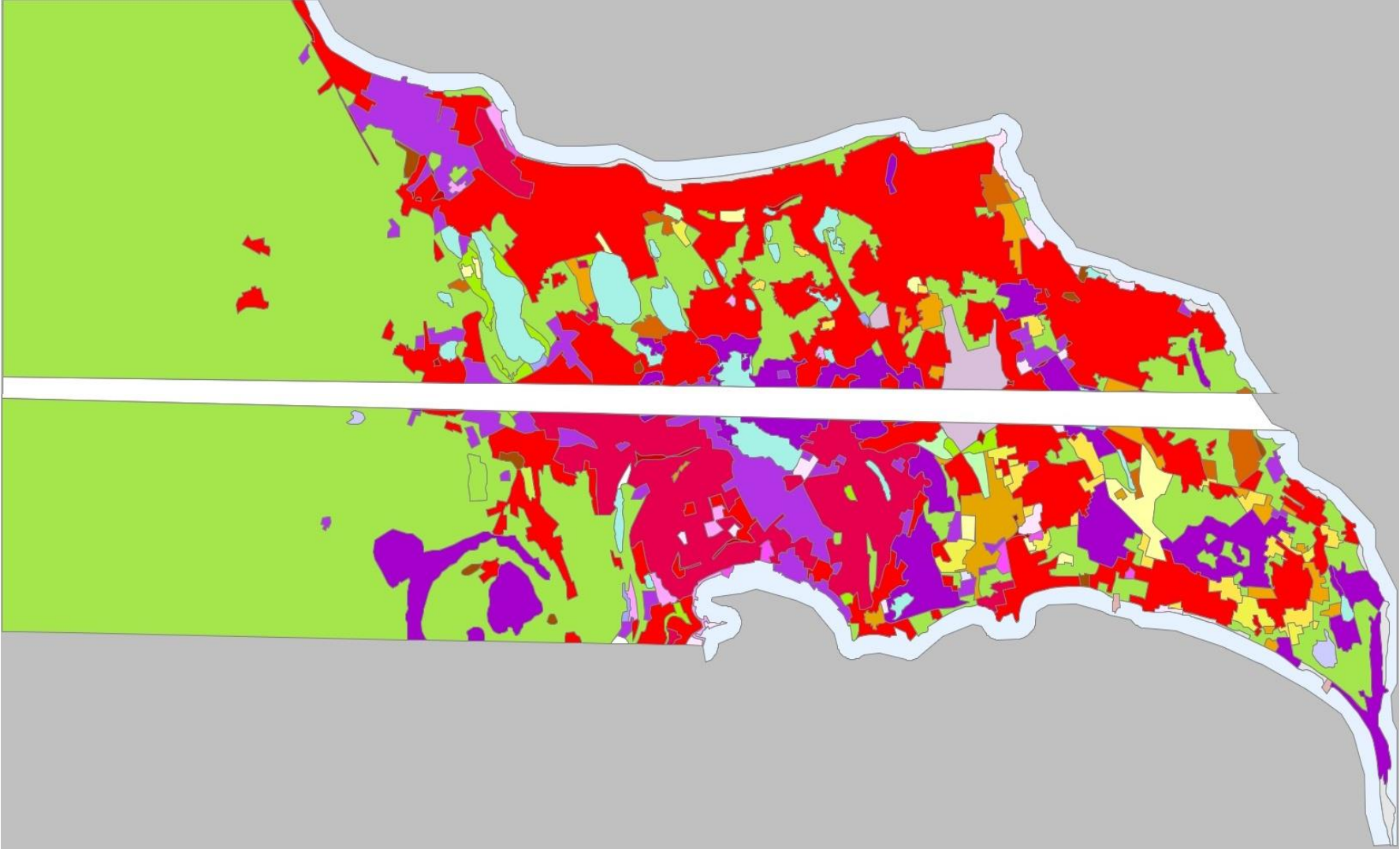
# Progress on ENI East Land Cover activity: Armenia

- Discussions just started between EEA/ETC-ULS and MoE.
  - National Team nominated.
- Next urgent steps:
  - Selecting the pilot area and satellite images
  - Organising the 1st training course in Armenia
  - Start CLC mapping activity...

Preparations need to speed-up, we have only 7 months left...



# Progress on ENI East Land Cover activity: Azerbaijan



CLC2018

Status: in progress

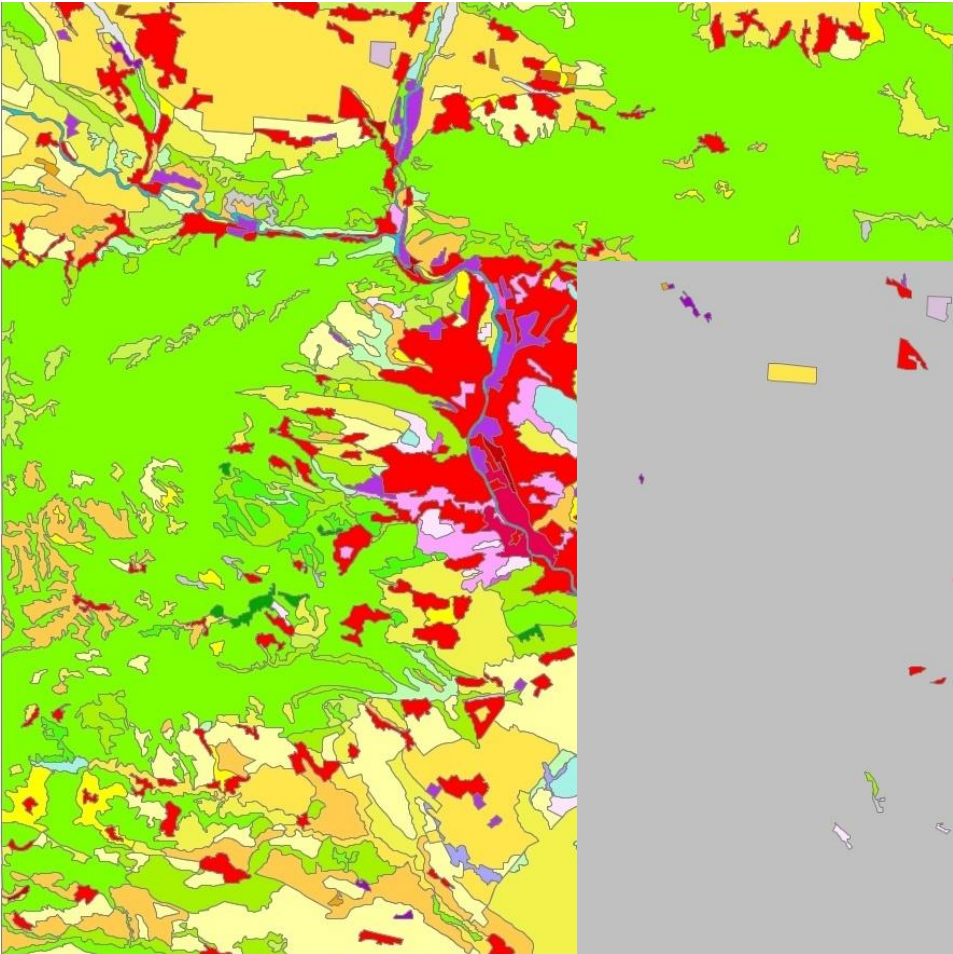


# Overview of remaining project activities: Azerbaijan

- Correction of CLC2018 based on 1st verification by ETC-ULS
- Organise the 2nd training course in Baku (26-27 November)
- Mapping CLC-Change between 2000 and 2018
- Finalizing datasets based on 2nd verification
- Generating CLC2000 from CLC2018 and CLC-Change(2000,2018)
- Writing Technical Report
- Delivery of results
  
- Dissemination of results, visibility
- Making steps towards continuation of CLC, based on users' needs



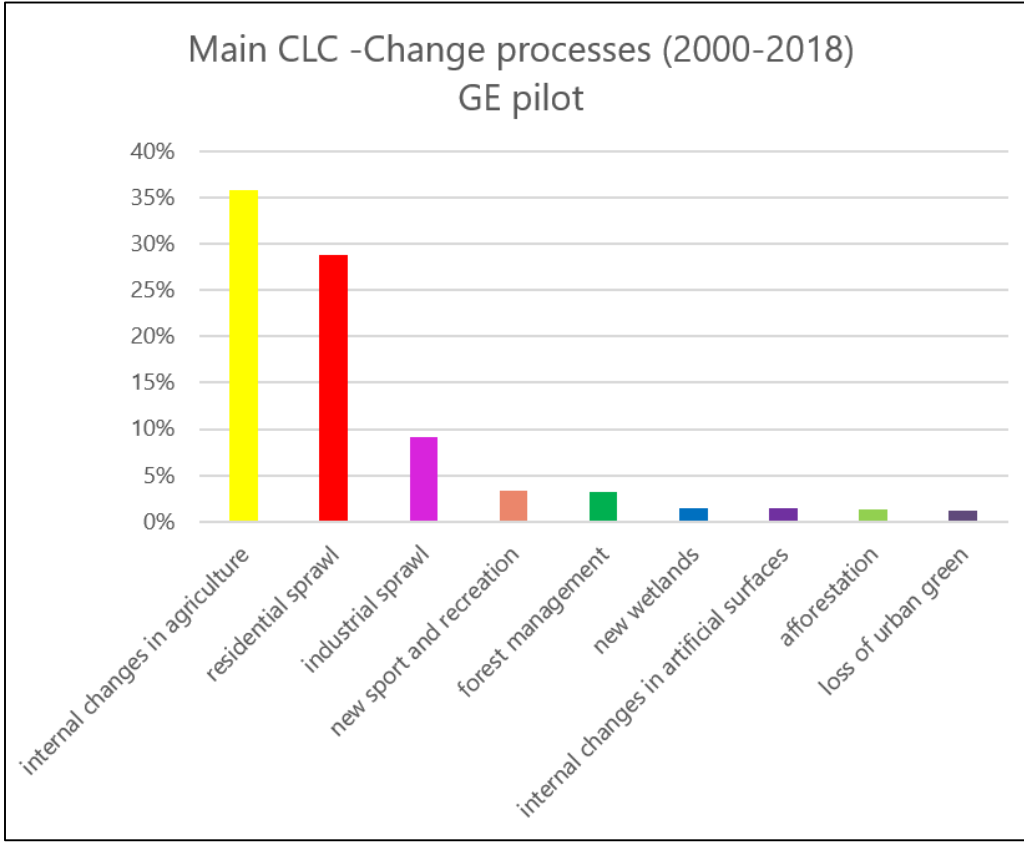
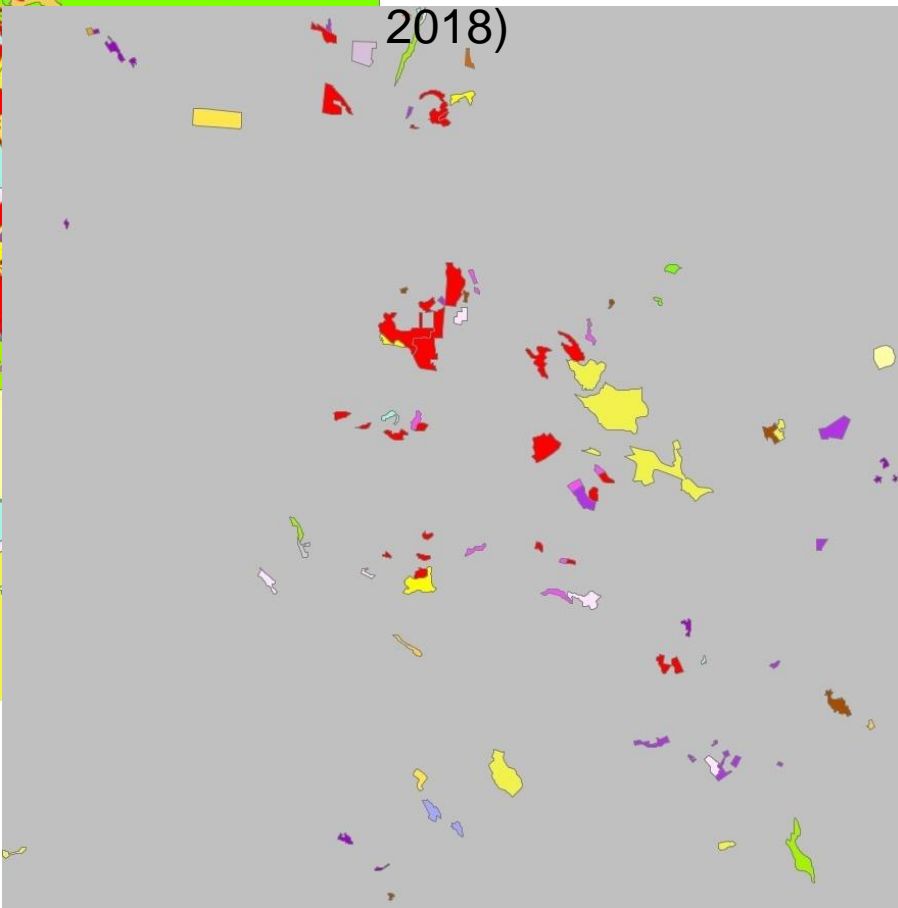
# Progress on ENI East Land Cover activity: Georgia



CLC2018



CLC-Change (2000-2018)



Status: completed

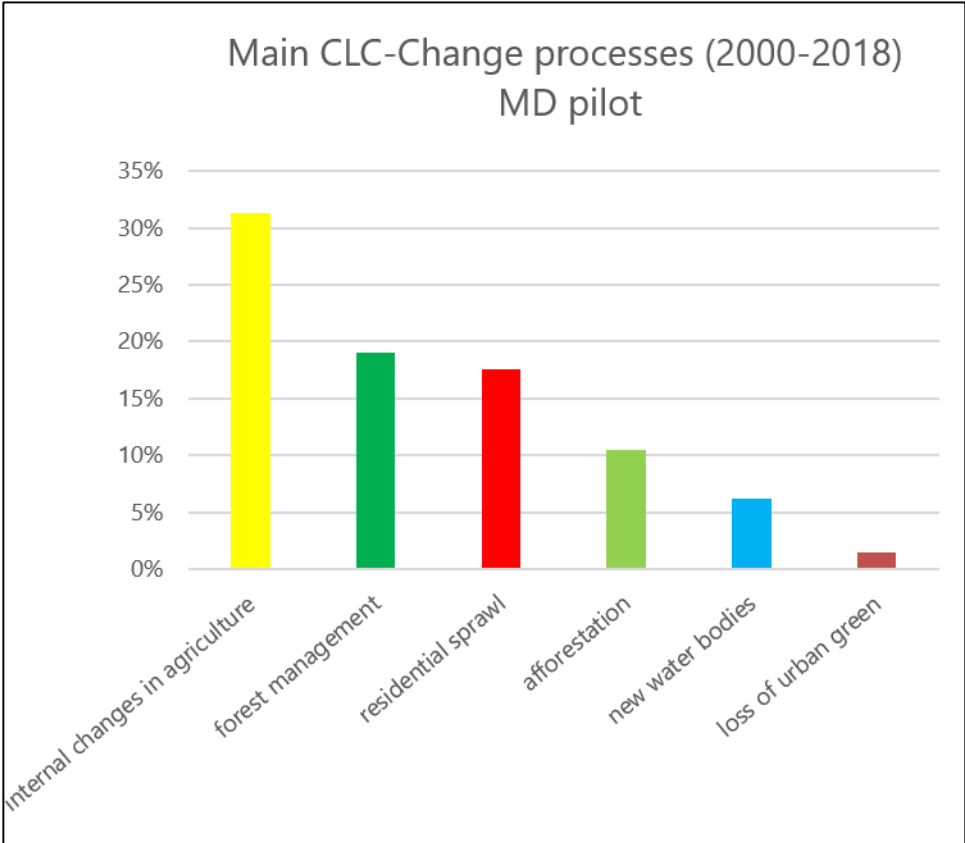
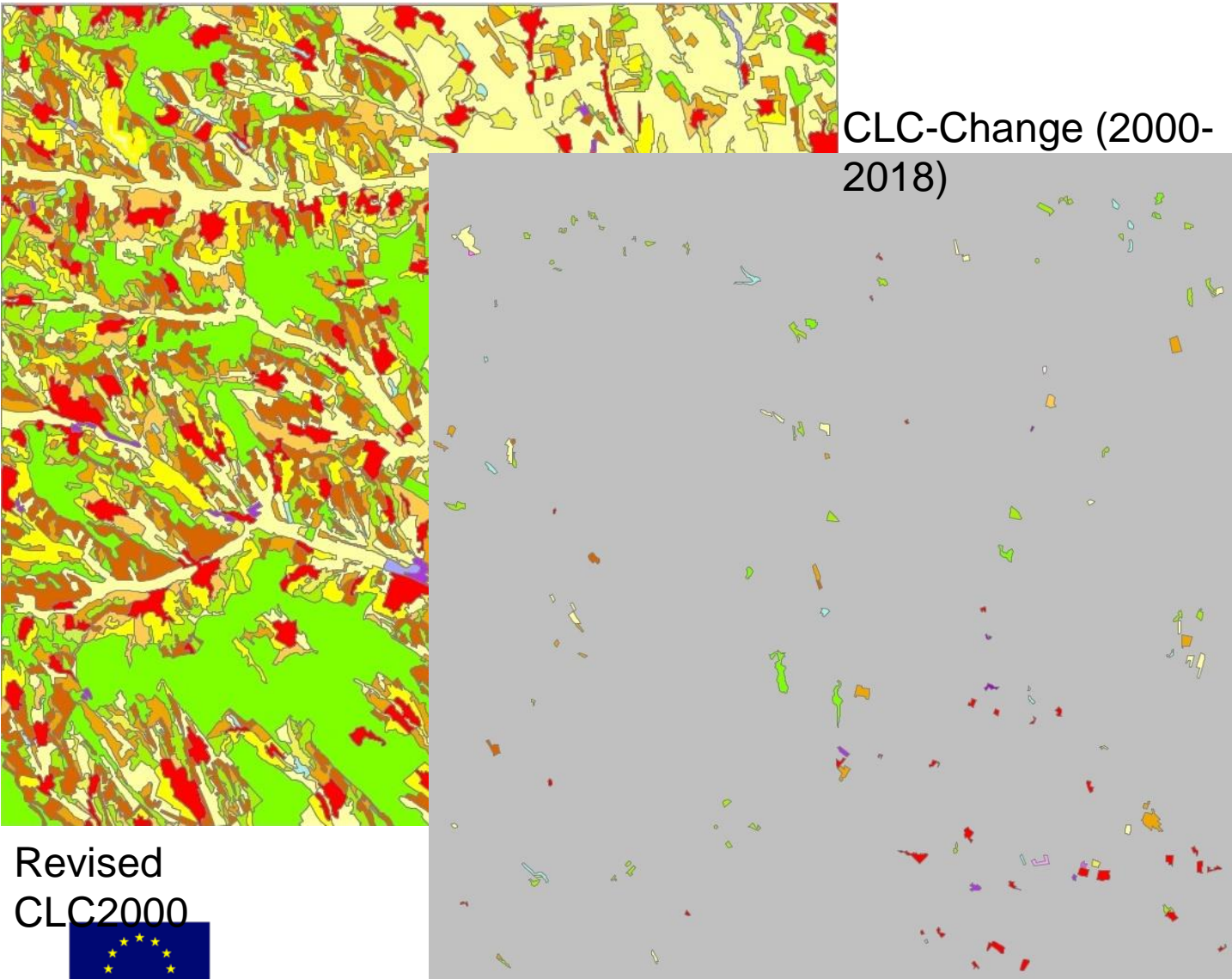
# Overview of remaining project activities: Georgia

- Writing Technical Report according to standard template
- Dissemination of results, visibility (continue)
- Making steps towards continuation of CLC, based on users' needs





# Progress on ENI East Land Cover activity: **Moldova**



Status: close to completion

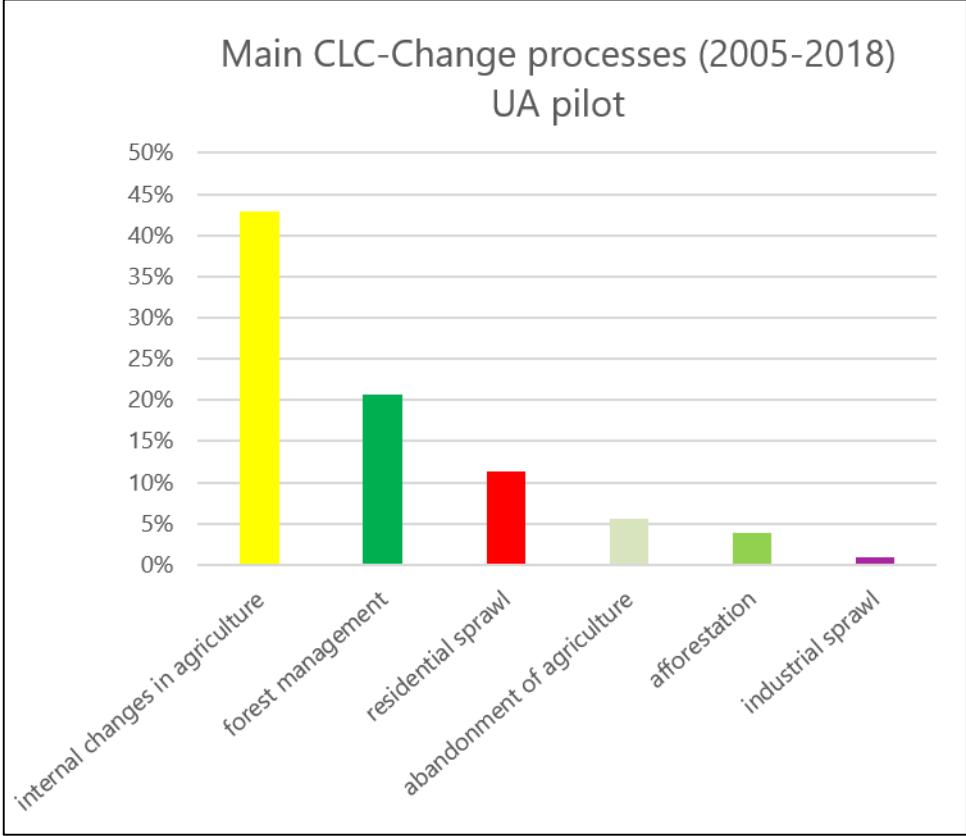
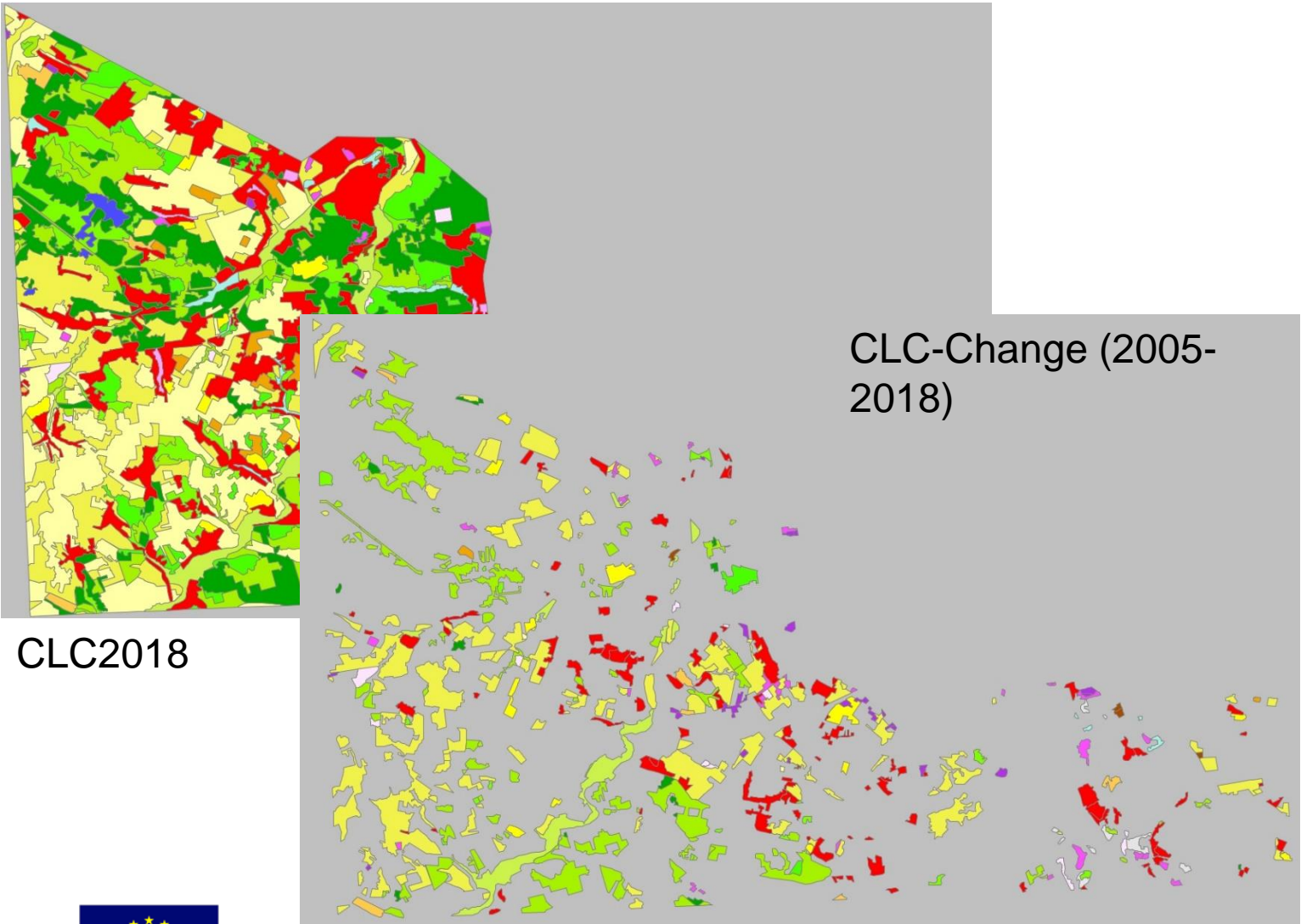


# Overview of remaining project activities: **Moldova**

- Finalizing datasets based on last verification
- Generating CLC2018 from CLC2000 and CLC-Change(2000,2018)
- Writing Technical Report
- Delivery of results
  
- Dissemination of results, visibility
- Making steps towards continuation of CLC, based on users' needs



# Progress on ENI East Land Cover activity: **Ukraine**



Status: close to completion

# Overview of remaining project activities: Ukraine

- Finalizing datasets based on 2nd verification
- Generating CLC2000 from CLC2018 and CLC-Change(2000,2018)
- Writing Technical Report
- Delivery of results
  
- Dissemination of results, visibility
- Making steps towards continuation of CLC, based on users' needs



# Key recommendations/guidance to the partners

- Promote achievements of the CLC pilot in the country and think about applications of CLC.
- Continue discussions between MoE (main user) and the technicians producing CLC.
- Attract potential users from other domain (agriculture, hydrology, water management..)
- Formulate proposal for continuation of the work according to the needs of the country and submit for funding. Key questions:
  - Coverage: a region or the entire country (?)
  - Content: standard CLC or an enhanced (higher resolution) CLC (?)
- **Act quickly before experience is forgotten!!!**



# Institutions in partner countries contributing to the pilots

Ministry of Ecology and Natural Resources (AZ)  
Geodesy and Cartography LLC (AZ)

Ministry of Environmental Protection and Agriculture (GE)  
GISLab (GE)

Environmental Agency of Moldova (MD)  
Agency for Land Relations and Cadastre (MD)  
S.E. INGEOCAD (MD)

Ministry of Energy and Environmental Protection (UA)  
National University of Life and Environmental Sciences (UA)  
SSPS Pryroda (UA)

