

Tbilisi | Wednesday 14 November 2018 | *Maia Javakhishvili, NFP*

SESSION 2

National impacts and deliverables of the ENI SEIS II East project

GEORGIA



0. National Commitments on SEIS

Association Agreement

- **DIRECTIVE 2003/4/EC** on public access to environmental information
- setting up of practical arrangements under which environmental information is made available to the public and the applicable exceptions;
- ensuring that public authorities make environmental information available to the public;
- establishment of procedures to review of decisions not to supply environmental information or to supply only partial information;
- establishment of a system for disseminating environmental information to the public.



Association Agenda

- Enhance environmental governance by ensuring public access to environmental information and public participation in decision-making, by involving all interested stakeholders, as well as by improving environmental information sharing in line with the principles of the Shared Environmental Information System (SEIS)

Conventions

- **Convention on Access to Information, Public Participation in Decision-making and Access to Justice in Environmental Matters** (Aarhus Convention)

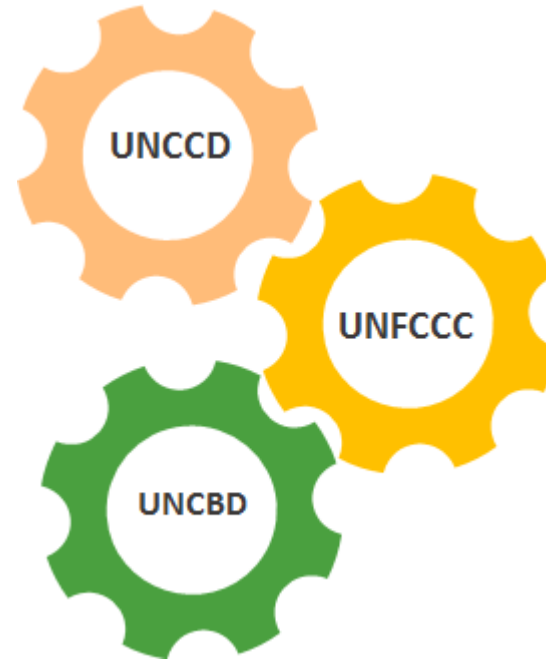


1. Progress towards the expected results - Infrastructure (1/4)

Environmental Information and Knowledge Management System



eims.eiec.gov.ge

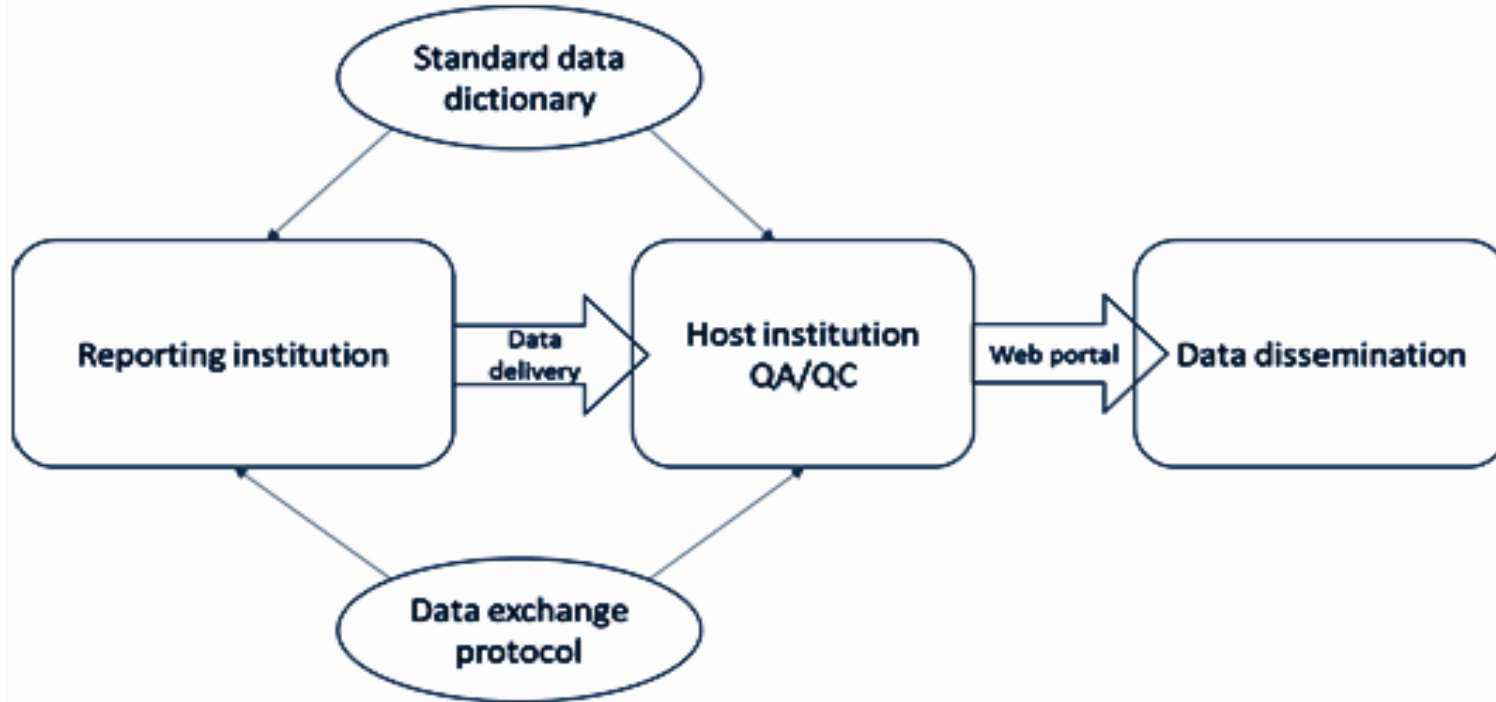


- provides opportunity to public to have easy access to various environmental information
- ensures exchange of environmental information between stakeholders
- facilitates implementation of international obligations
- improves efficiency of environmental decision-making and policy-making



1. Progress towards the expected results - Infrastructure (3/4)

Water Information System (WIS) - National Pilot



Simplified model of water information system

Risk

Low level of integration of WIS elements

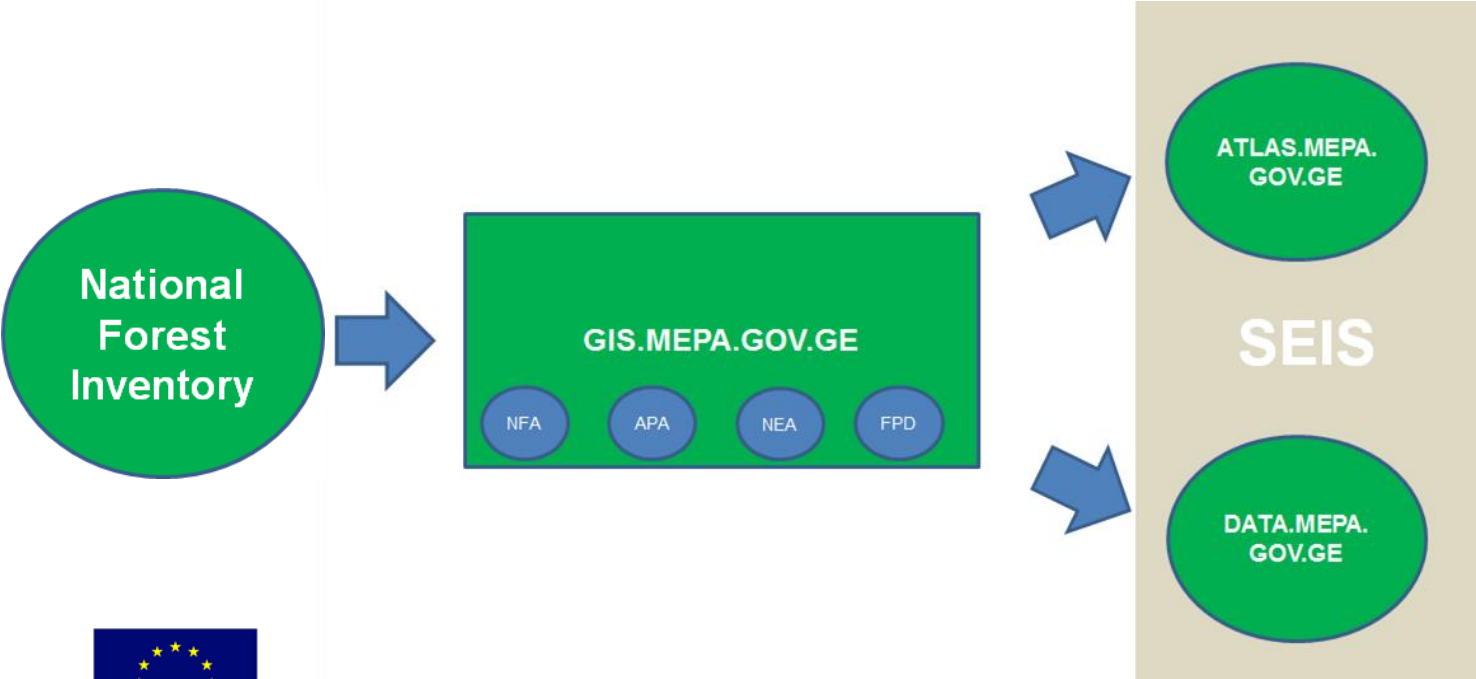
- Harmonize the water data via the implementation of the standard data dictionaries and align them with the State of the Environment Reporting of the Water Information System for Europe (WISE-SoE) and the EU Water Framework Directive (WFD)
- Develop a national portal for the water data and information by replicating the concept of the Water Information System for Europe (WISE)
- Publish the indicators and underlying data on the national portal of water information system



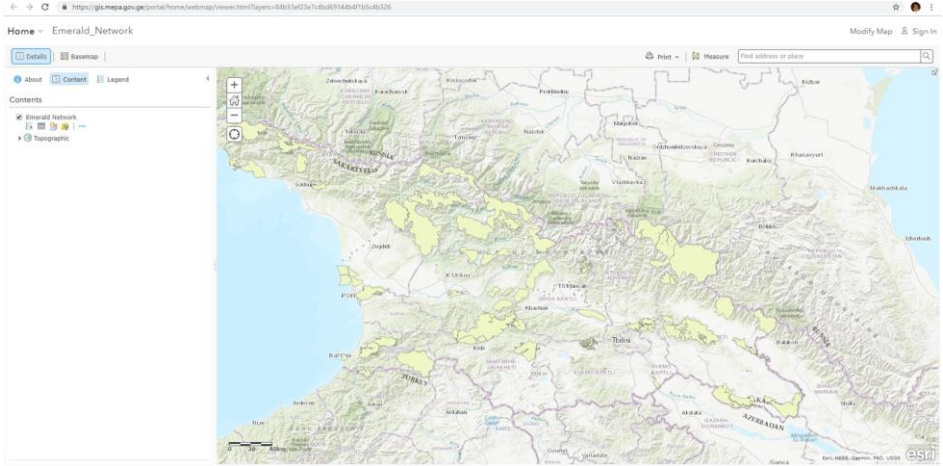
1. Progress towards the expected results - Infrastructure (4/4)

Web-based Forest and Land-use Information and Decision Support (FLUIDS) System

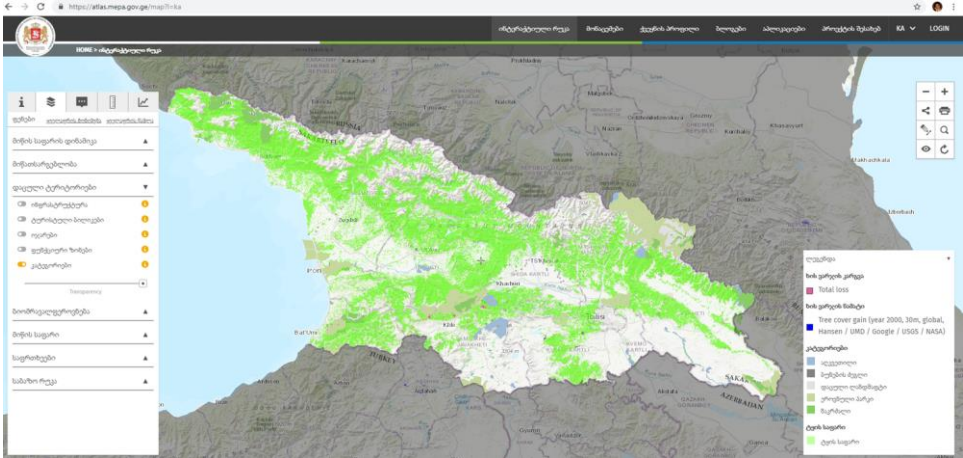
- Data management tool
- Store, organize and integrate large amounts of forest and land-use related data from multiple sources
- Ability to perform required analysis



<https://gis.mepa.gov.ge/portal/home/>

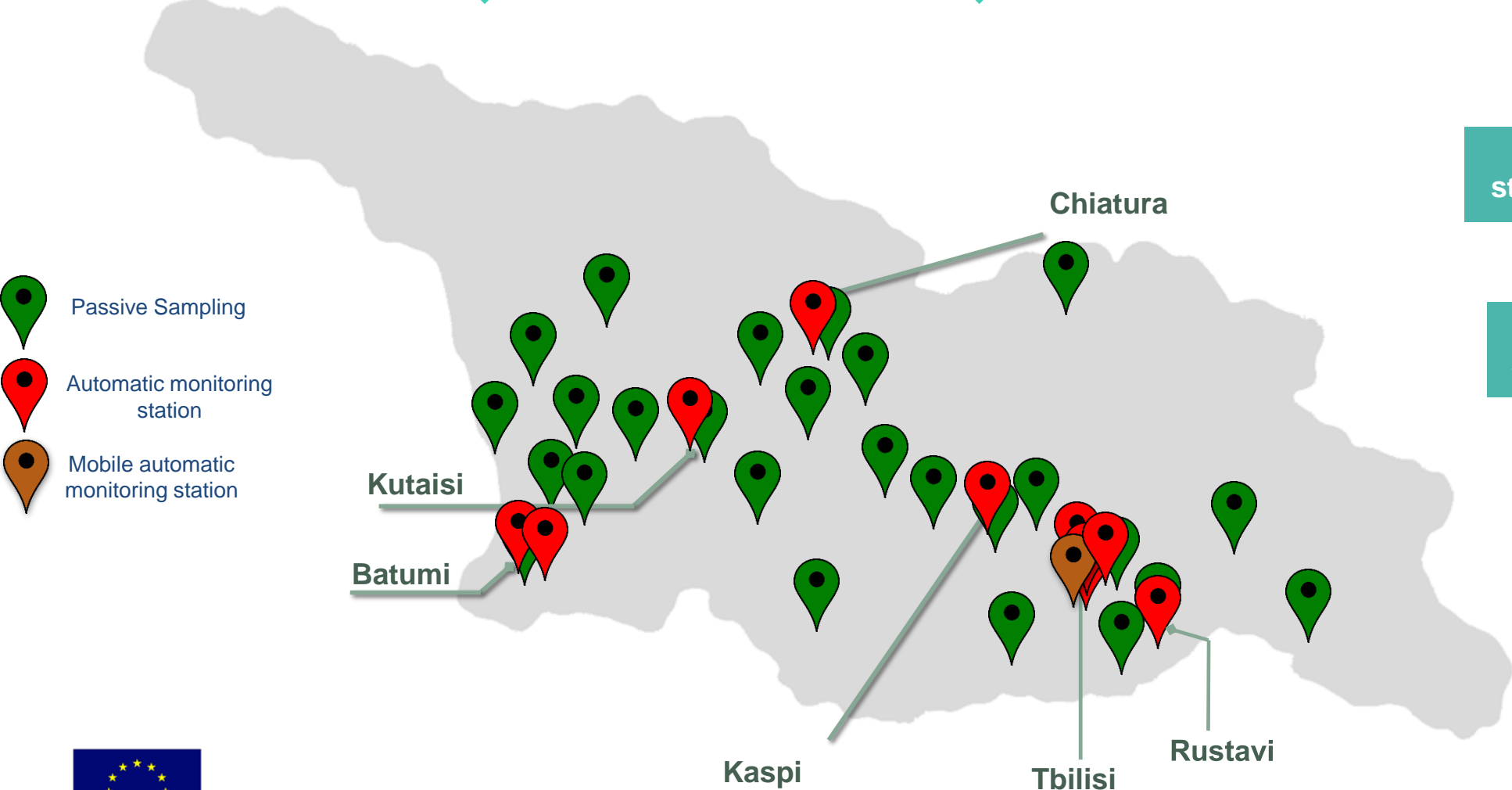


<https://atlas.mepa.gov.ge>



1. Progress towards the expected results - Content (1/2)

2015: 1 Automatic monitoring station, Quarterly Passive Sampling in 10 cities
2016: 6 Automatic monitoring stations, Quarterly Passive Sampling in 16 cities
2017: 8 Automatic monitoring stations, Quarterly Passive Sampling in 20 cities
2018: 9 (1 mobile) Automatic monitoring station, Quarterly Passive Sampling in 25 cities



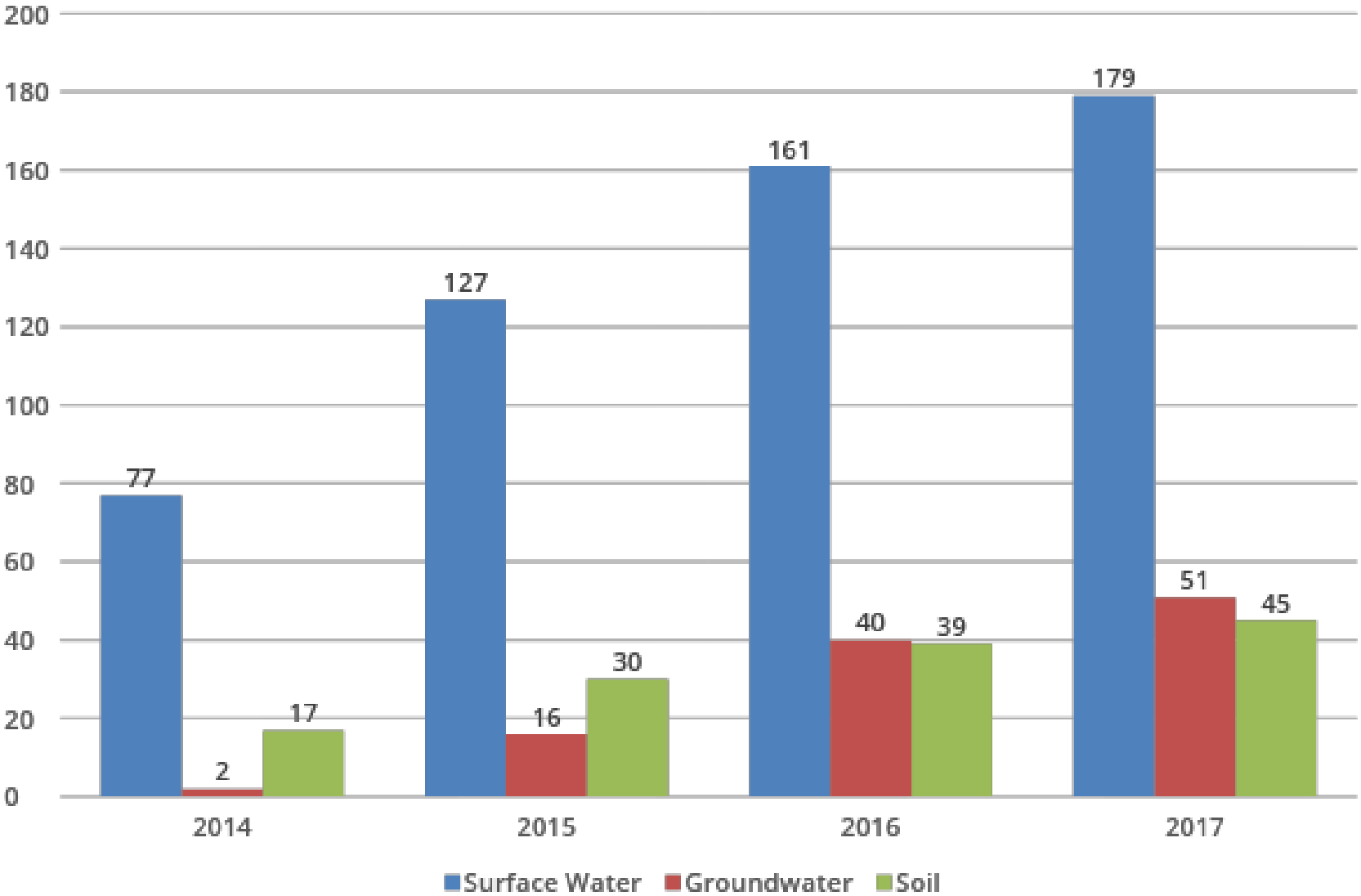
new automatic monitoring stations in Rustavi and Kaspi



11 automatic monitoring stations by the end of 2018



1. Progress towards the expected results - Content (2/2)



**Monitoring
Points**



1. Progress towards the expected results - Coordination (1/1)

MoU between MEPA and GEOSTAT



Data exchange calendar

Instant update of environmental statistics data on GEOSTAT website

Bilateral working group (case-by-case)

Recommendations & proposals

Future needs and tasks

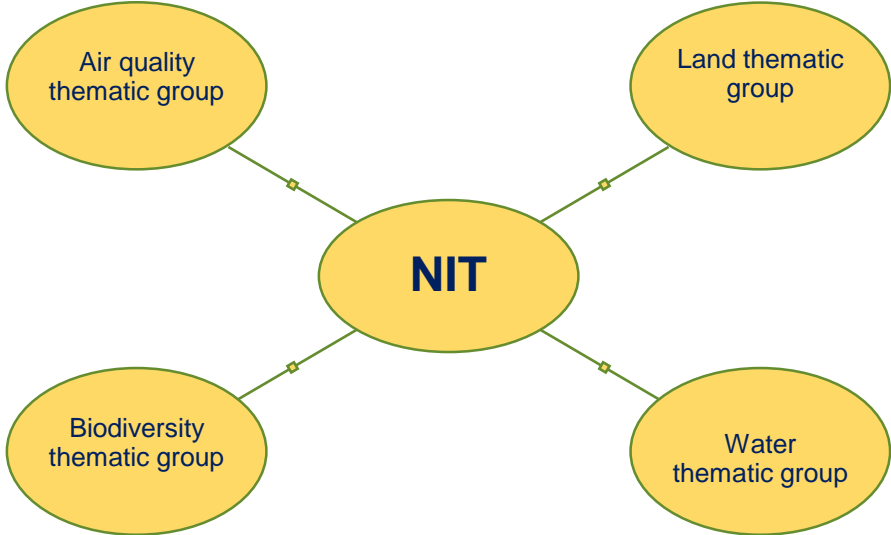
GEOSTAT and MEPA staff capacity building in environmental statistics

Update of MoU in 2019

Ministerial Order (N12; 27.03.2017) on proactive dissemination of public information, standard of requesting electronic public information and access to environmental information

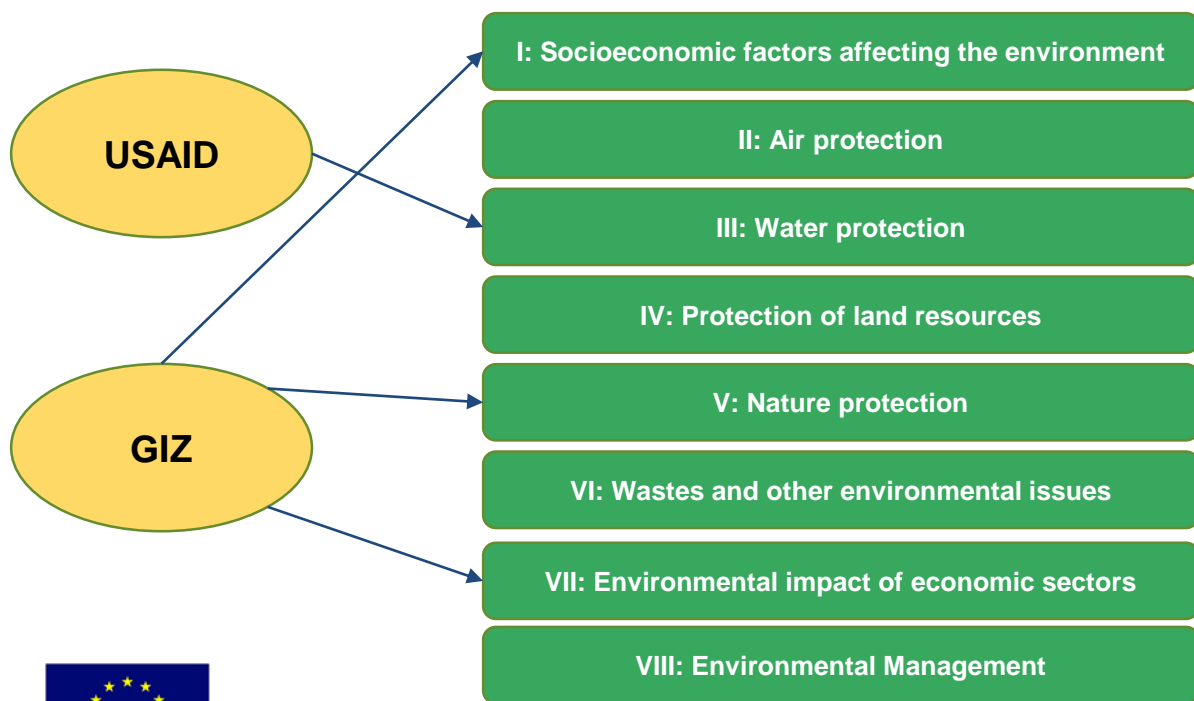


Draft Decree of the Government of Georgia on the approval of the rule on the access to environmental information

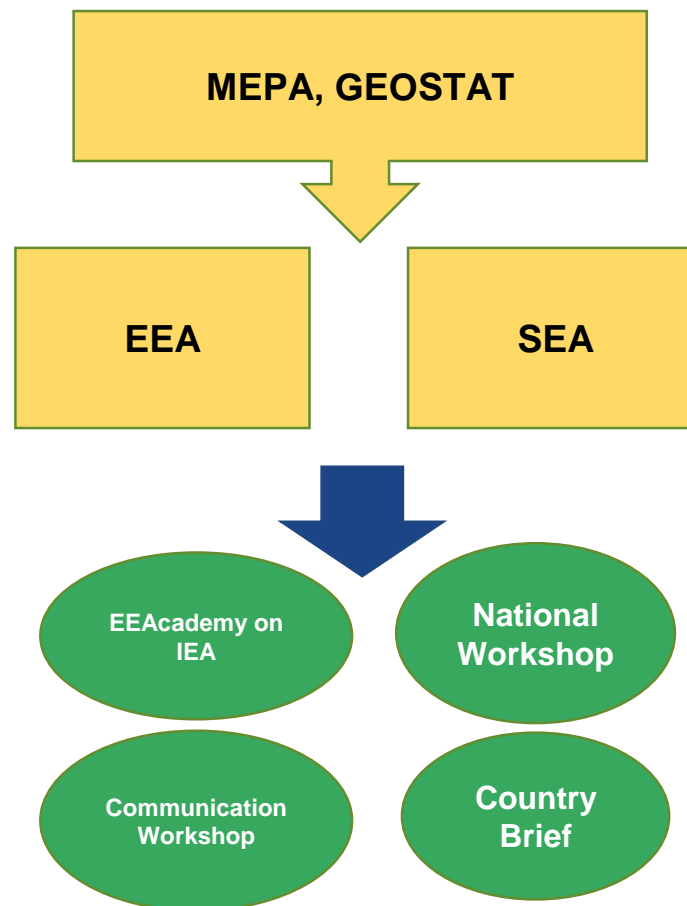


2. SEIS to support a regular assessment process (1/3)

NEW SoER 2014-2017



Experience sharing under ENI SEIS East II



2. SEIS to support a regular assessment process (2/3)

Water Quantity Indicators

C1: Renewable freshwater resources

C2: Freshwater abstraction

C3: Total water use

C4: Household water use per capita

C5: Water supply industry and population connected to water supply industry

Water Quality Indicators

C10: BOD and concentration of ammonium in rivers

C11: Nutrients in freshwater

Biodiversity Indicator

D1: Protected Areas



2. SEIS to support a regular assessment process (3/3)

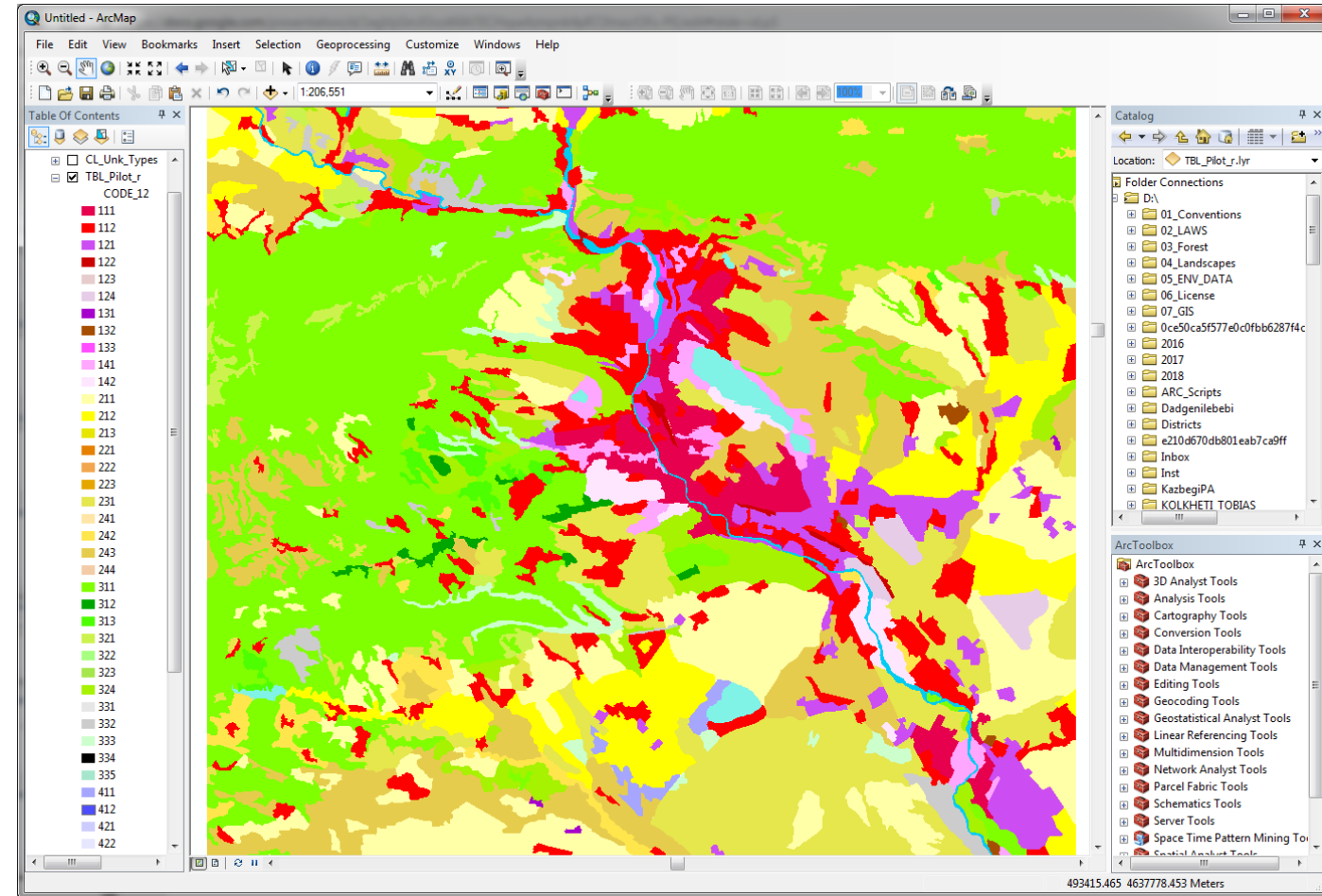
Land Component

CORINE Land Cover

Pilot Project Tbilisi Urban Area and Surroundings
50kmx50km

Main achievements:

- Methodologies are harmonised in line with EU/EEA - CORINE Land Cover;
- Inter-institutional working group established at national level;
- Pilot Project implemented.



Tbilisi Capital Urban Area - CLC Status Layer 2018



3. Sustainability and connectivity (1/2)

Synergies between the ENI-SEIS network and other regional initiatives and projects



New Project funded by the EU: EU4Environment



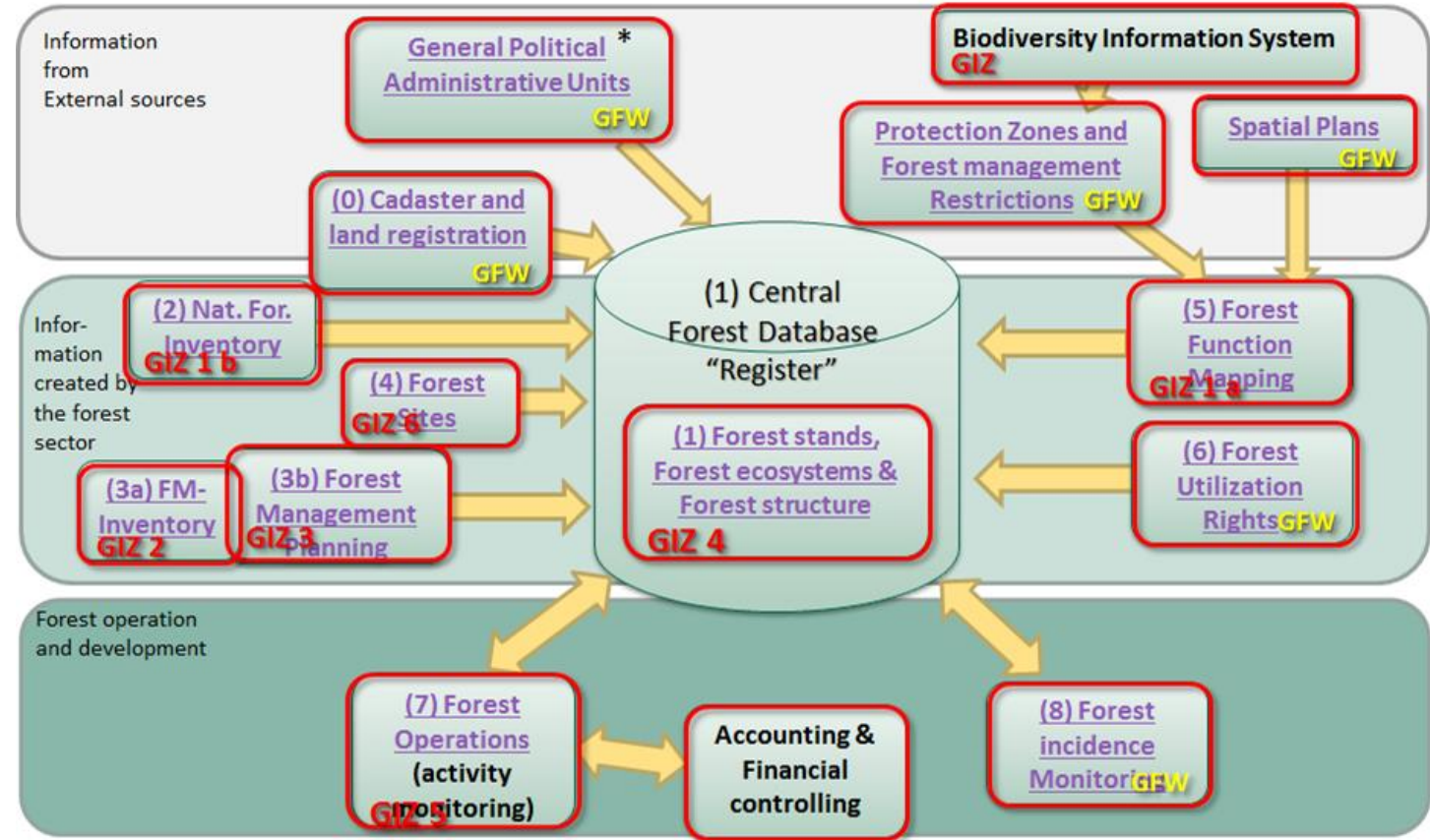
3. Sustainability and connectivity (2/2)

Further Development of Environmental Information and Knowledge Management System

- Develop and integrate additional thematic modules in the system for dissemination of environmental information in the country

Development of Forest Information and Monitoring System (FIMS)

- Pool and systematize all forest related information
- Provide access to other relevant databases of the country
- Ensure public access to forest related information
- Support decision makers from various forest authorities



Development of Forest Information and Monitoring System (FIMS)





Thank you for your attention!

Maia Javakhishvili

Deputy Head

*Department of Environment
and Climate Change*

Email: Maia.Javakhishvili@mepa.gov.ge

Tbilisi, Georgia 14 November 2018