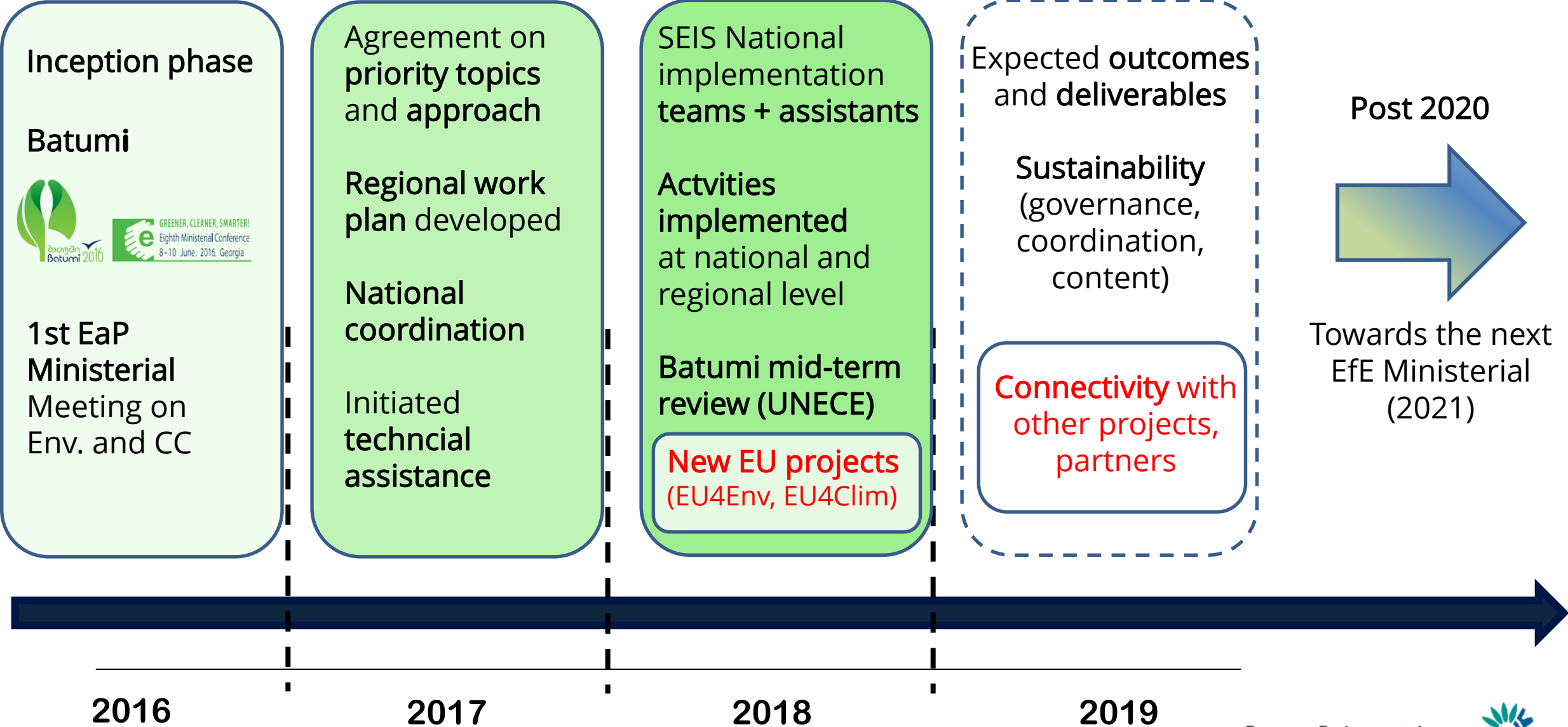


SESSION 2

Overview of project implementation and progress during the past year



Timeline ENI SEIS II East Project



2016

2017

2018

2019



2nd Steering Committee, 12-13 December 2017 (1/2)

SOME KEY ISSUES / ACTIONS

Networking aspects:	<ul style="list-style-type: none">• The nomination of national experts for each of the thematic/expert activities• Importance of well functioning SEIS National Implementation Team (NIT)• Appointment and role of SEIS National Assistants
New regional thematic priorities:	<ul style="list-style-type: none">• Proposals to be further developed for project support in areas of air quality and links with open data/e-governance initiatives.
Information systems and Infrastructure:	Thematic areas → portals → sub-components of National Integrated Environmental Information Systems

2nd Steering Committee, 12-13 December 2017 (2/2)

SOME KEY ISSUES / ACTIONS

Synergies with other initiatives/ projects:

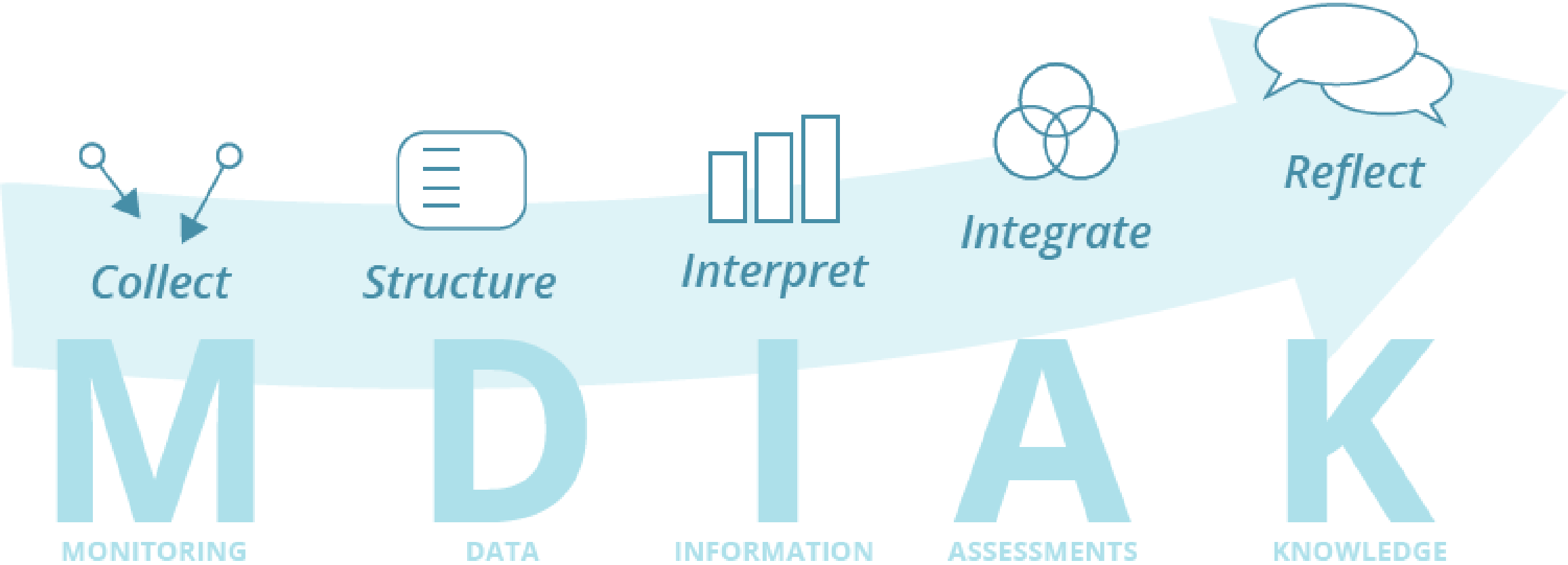
- EEA/Eionet - UNECE/UNEP for SEIS Assessment Framework (mid-term review of Batumi mandate)
- **Regional projects**, i.e. EUWI+, UNDP GEF, UNDA
- Links to Twinning projects at national level
- National cases to demonstrate SEIS in practice

Communication and visibility:

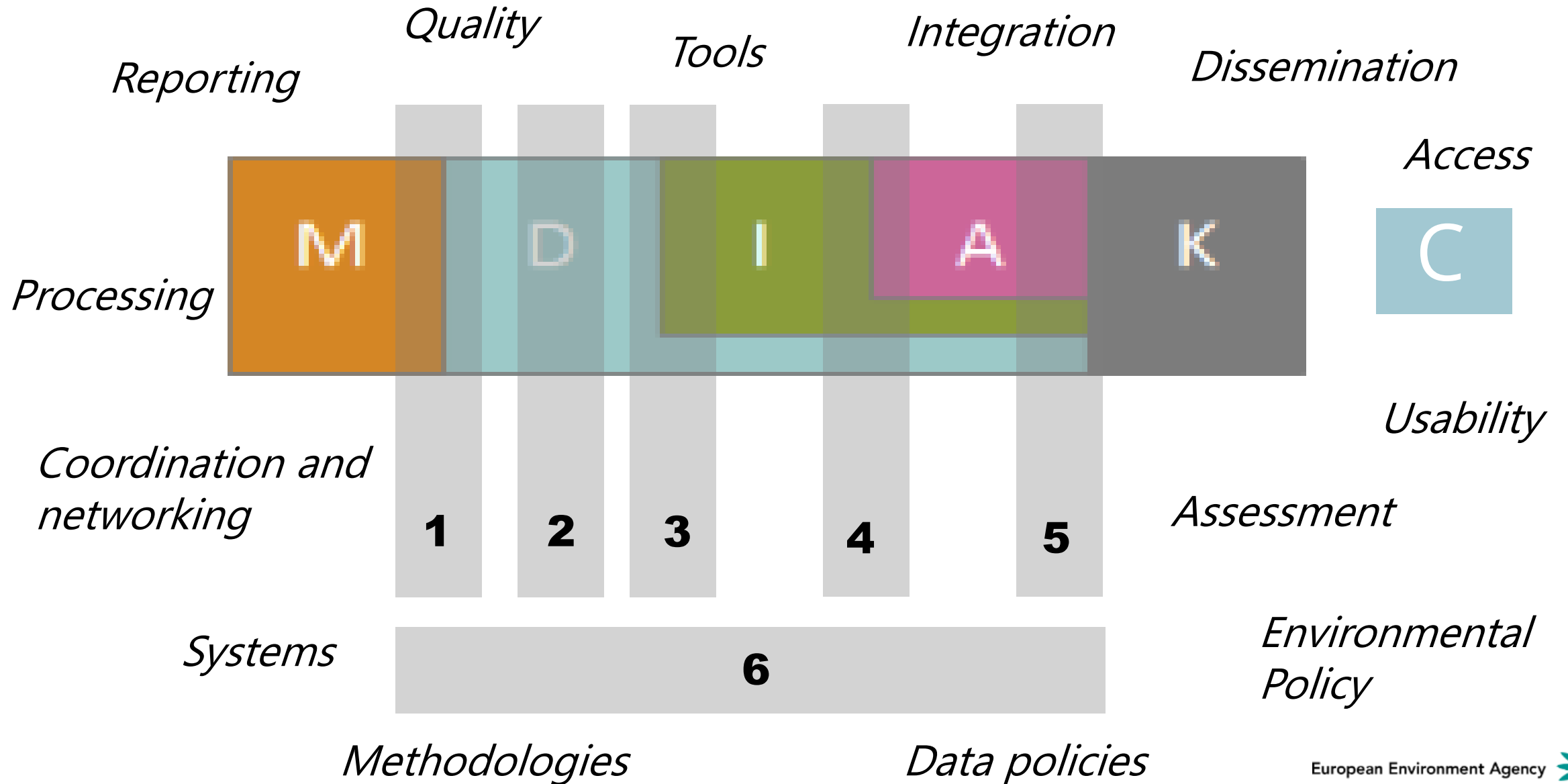
- Importance of national communication campaigns and visibility at key regional events



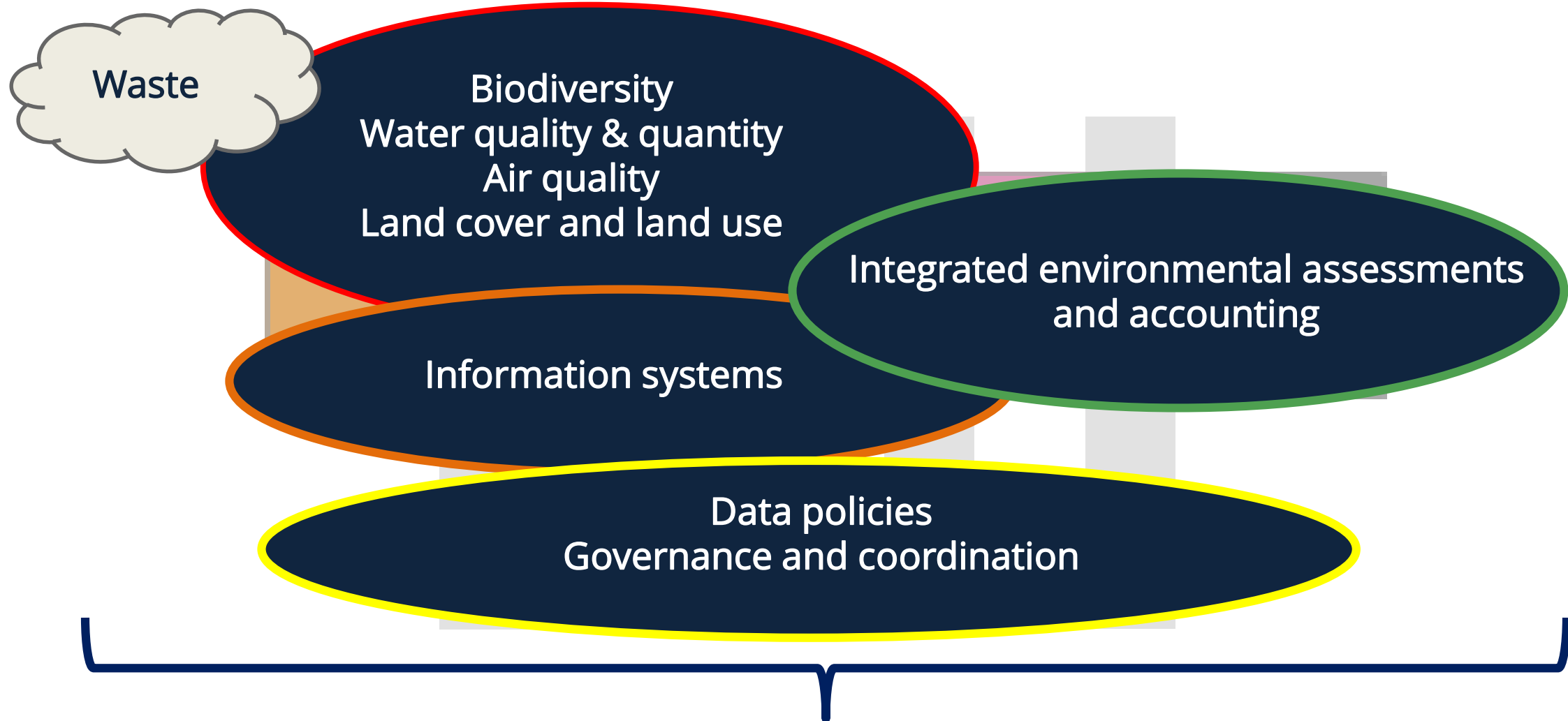
Approach: working across the M-D-I-A-K chain



Wide range of targeted actions and support



ENI SEIS II East thematic support and deliverables



Measuring progress establishing SEIS

SEIS Assessment Framework (mid-term review of Batumi mandate)

European knowledge platforms and tools as guidance

WISE
The Water Information System for Europe
– or more commonly known as WISE – is your gateway to information on European water issues. It comprises a wide range of data and information collected by EU institutions to serve several stakeholders.

Policy | Data and topics | Modelling | Projects and research

WATER

WISE is a partnership between the European Commission (EC) and the European Environment Agency (EEA) and the European Centre for Environment and Human Health (ECHO). The EEA and ECHO are responsible for the overall management of the platform.

• DG Environment, leads the policy and strategic aspect of WISE. It liaises with Member States, especially on official reporting requirements of EU water legislation. For more information: <http://ec.europa.eu/environment/water/index.html>

• The European Environment Agency hosts the Water Data Centre and the thematic WISE webpages. For more information: <http://www.eea.europa.eu/themes/water/>

• The Joint Research Centre conducts environmental monitoring, including nowcasting and forecasting services. For more information: <http://ies.jrc.ec.europa.eu/the-institute/>, <http://desert.jrc.ec.europa.eu/>, <http://fate.jrc.ec.europa.eu/>

Climate-ADAPT: Sharing adaptation information across Europe
European Climate Adaptation Platform

About | Database | EU policy | Countries, regions, cities | Knowledge | Network | Help

About Climate Change Adaptation in Europe
The European Climate Adaptation Platform (Climate-ADAPT) aims to support Europe in adapting to climate change. It is an initiative of the European Commission and helps users to find case studies on adaptation in Europe.

CLIMATE CHANGE

EIONET
The Air Quality Portal

SERVICES | REPORTING | TOOLS | TOPICS (ETC)

Shortcuts: Home, Notifications, Site map, AQ IPR Helpdesk

Important documents: AQ Directive 2008/50/EC, 4th Daughter Directive 2004/107/EC, IPR Decision 2011/850/EU, IPR guidance I, IPR guidance II, User Guide to XML

Welcome to the Air Quality Portal
This portal contains details relevant for the reporting of air quality information from EU Member States and other EEA member and co-operating countries. This information is submitted according to Directives 2004/107/EC and 2008/50/EC of the European Parliament and of the Council.

The different sections of the site allow you to:

- working documents for second TIPR meeting - 23/11/2016
- new viewer - feedback on submission - 23/11/2016

AIR QUALITY

EU Biodiversity Strategy to 2020
Our life insurance, our natural capital
The protection, conservation and enhancement of the Union's natural capital is one of the 9 priority objectives of the 7th General Union Environment Action Programme to 2020: 'Living well, within the limits of our planet.'

BIODIVERSITY

BISE Highlights

- Towards the 2020 biodiversity targets
- Mapping and Assessment of Ecosystems and their Services (MAES)
- BISE - CHMs network of Europe

Mid-term review of the EU biodiversity strategy to 2020:

- Leaflet and interactive presentation
- Interactive presentation of EU Biodiversity Strategy Mid Term Review
- Progress against targets

News - Europe

- LIFE, 18 Nov 2016: LIFEEnews N°6, 2016
- EC, 17 Nov 2016: Urban neighbourhood resilient flood new assessment tool hamburg
- EC, 17 Nov 2016: How to increase uptake environmentally friendly fertilisers germany
- EC, 17 Nov 2016: Notification inhibitors climate change mitigation ipcc less effective than thought
- EC, 17 Nov 2016: Household sources biocidal active substances assessed

News - World

- CBD, 22 Nov 2016: What will 1.5°C of global warming actually look like?
- CBD, 22 Nov 2016: Climate Change is Hindering The Cooling Properties Of Earth Volcanoes
- CBD, 22 Nov 2016: Marrakech: Where Extraordinary Momentum Is Shown on Climate Change
- CBD, 22 Nov 2016: Coal Mine Threatens Ecological Paradise in Chile's Patagonia Region
- CBD, 22 Nov 2016: 'Glow-in-the-dark geckos' help in

Copernicus Land Monitoring Service

Global | Pan-European | Local | Reference data

Events

- 24 Nov 2016, Understanding vulnerabilities, assessing economic gains and unlocking the transformative potential of climate adaptation in cities
- 06 May 2017, Resilient Cities 2017: the 8th Global Forum on Urban Resilience and Adaptation
- 08 Mar 2017, River Basin Adaptation Conference

Global: provides a series of bio-geophysical products on the status and evolution of the land surface at global scale at mid and low spatial resolution

Pan-European: provides information about the land cover and land use (LC/LU), land cover and land use changes and land cover characteristics

Local: focuses on different hotspots, i.e. areas that are prone to specific environmental challenges and problems

Reference data: All of the Copernicus services need access to in-situ data in order to ensure an efficient and effective use of Copernicus space-borne data

LAND

European Air Quality Index

Home | Reporting requirements | Toolbox | Products | Meetings | Links

Set of QA checks
if change of local IDs for sampling point, procedure
pollutant codes were used for BaP and Heavy Metals

Air quality legend: Good, Fair, Moderate, Poor, Very poor, No data

EU AIR QUALITY INDEX

THANK YOU !

<https://eni-seis.eionet.europa.eu/east>